

Installing TelecomFM 3GPhone Drivers on Microsoft Windows 8 or Microsoft Windows 8.1

By default Windows 8 and Windows 8.1 do not allow the user to install unsigned drivers so the installation of the 3GPhone drivers will fail with an error.

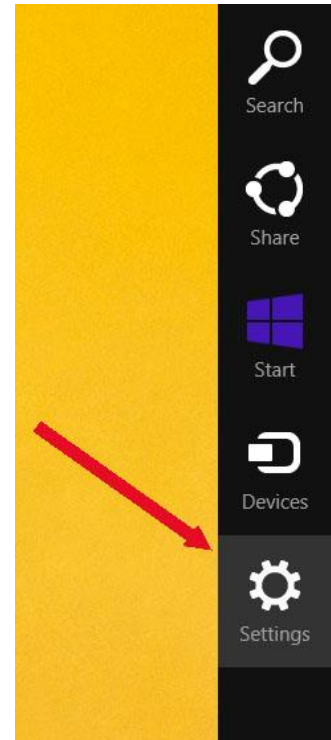
Follow this process to allow the drivers to be installed correctly.

Notes:

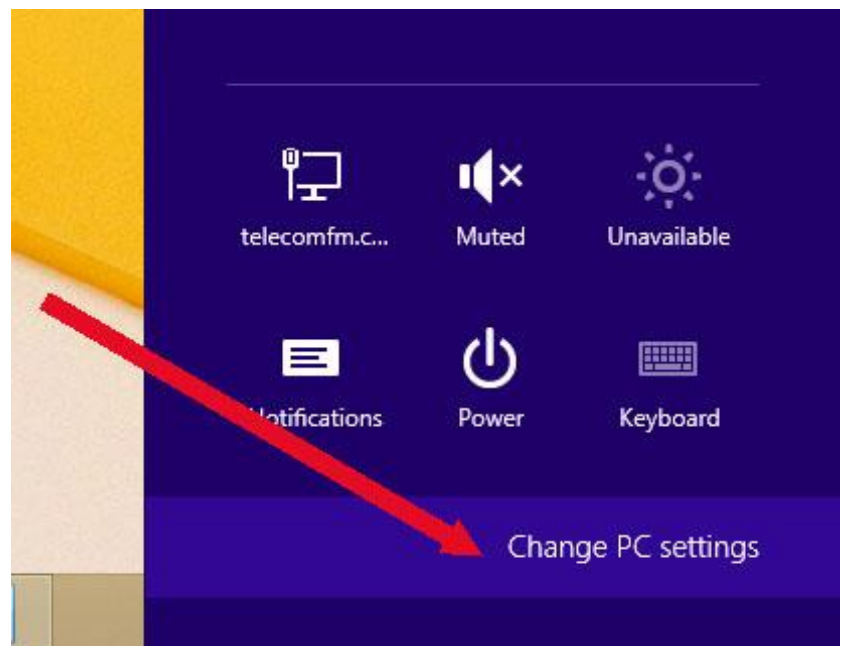
- Save all work before carrying out this process because a PC restart will be required.
- This process does not make any permanent changes to the Windows settings – the default settings are restored after a restart.

1. Press Windows key + C on the keyboard (or move the mouse pointer to the top right of the screen) to open the Windows Charms bar.

Click on the **Settings** icon.



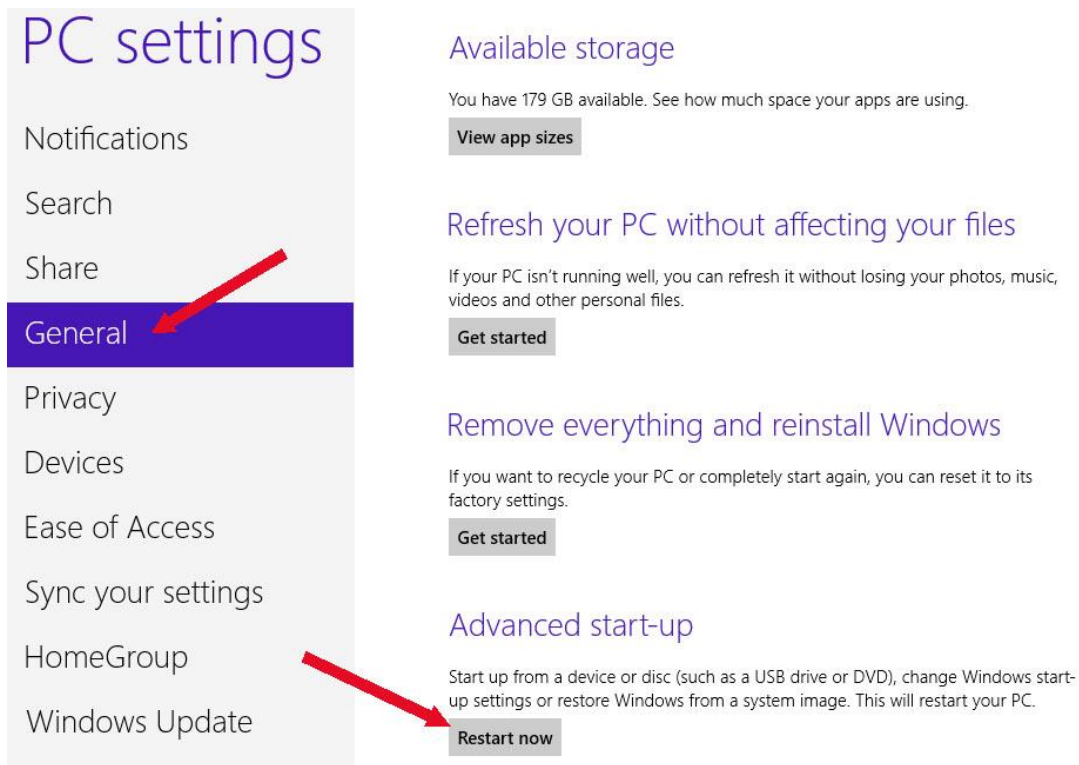
2. Click on **Change PC settings**.



3. Different sequence for Windows 8 and Windows 8.1:

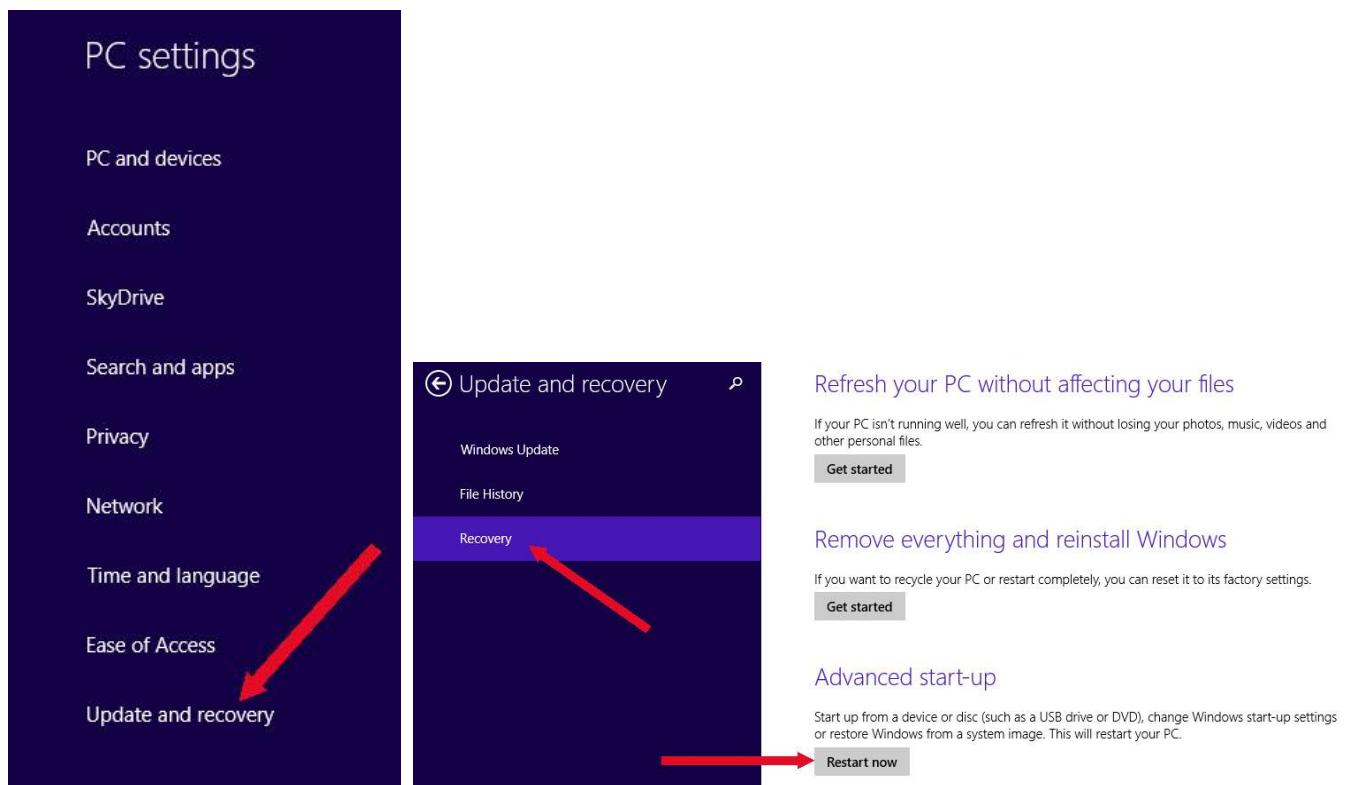
Windows 8

Click on **General** and then under “Advanced start-up” click **Restart now**.



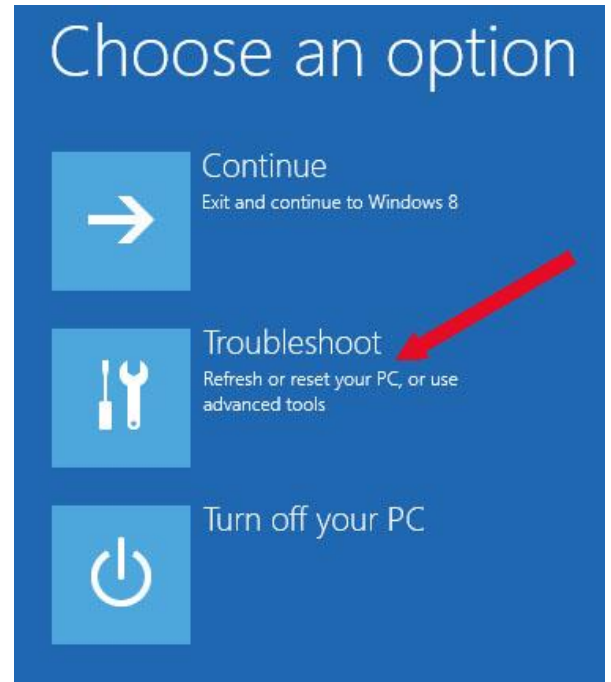
Windows 8.1

Click on **Update and recovery** followed by **Recovery** and then under “Advanced start-up” click **Restart now**

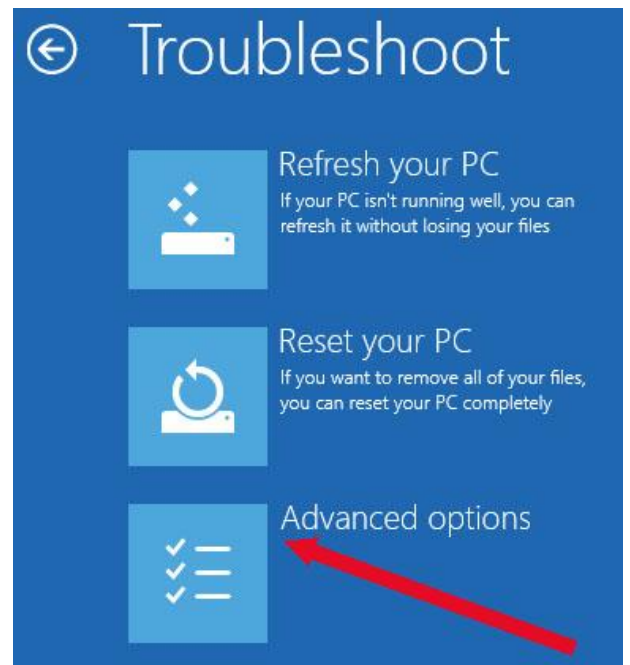


- All applications will then be closed and an options screen displayed.

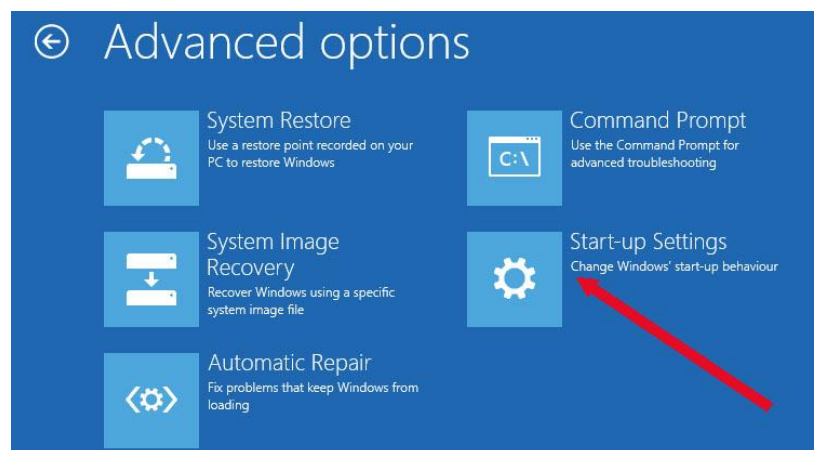
Click **Troubleshoot**



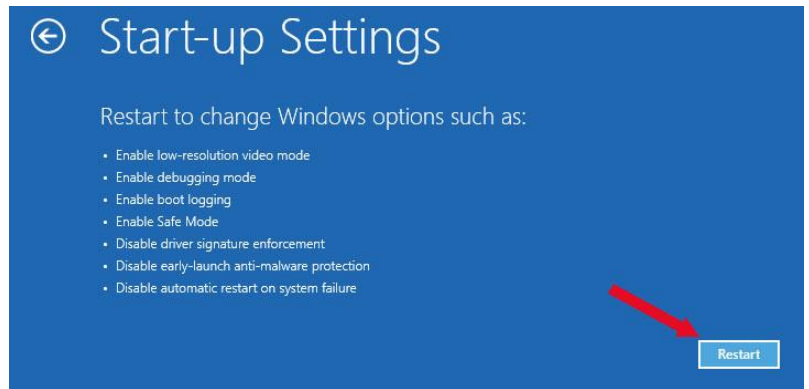
- Click **Advanced options**.



- Click **Start-up Settings**

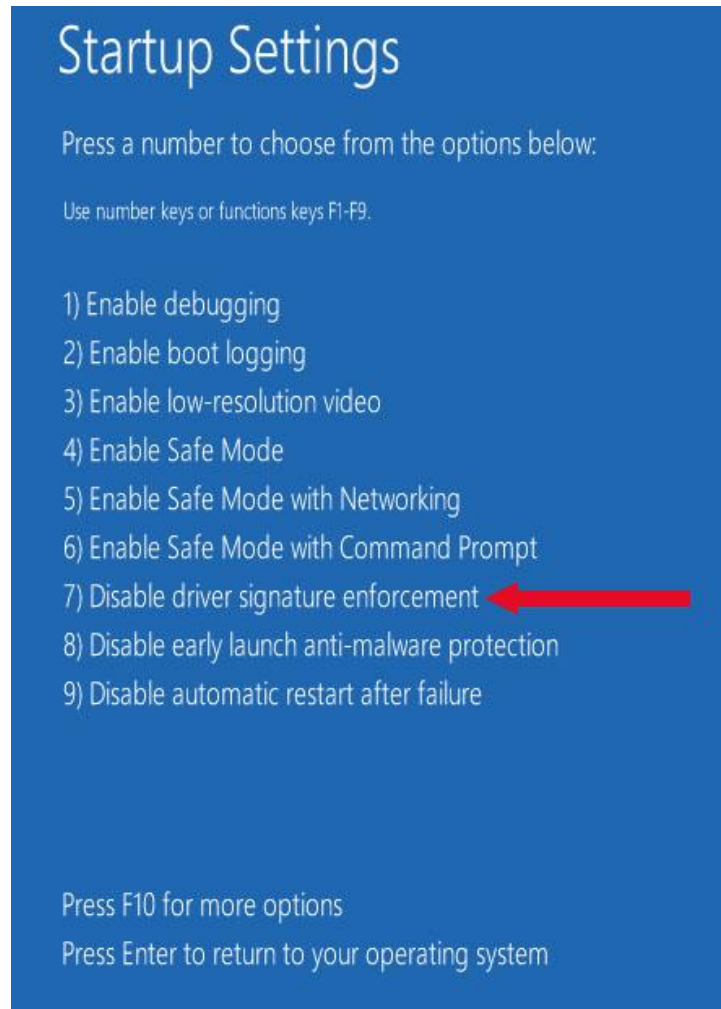


7. Click **Restart**



8. The PC will now restart and then the Startup Settings screen will be displayed.

Press the number 7 key on the keyboard to select "Disable driver signature enforcement".



9. When Windows has finished starting the 3GPhone drivers can then be installed normally.

Note that when Windows is next restarted the "driver signature enforcement" will be enabled again but the 3GPhone drivers that have been installed will continue to work correctly.