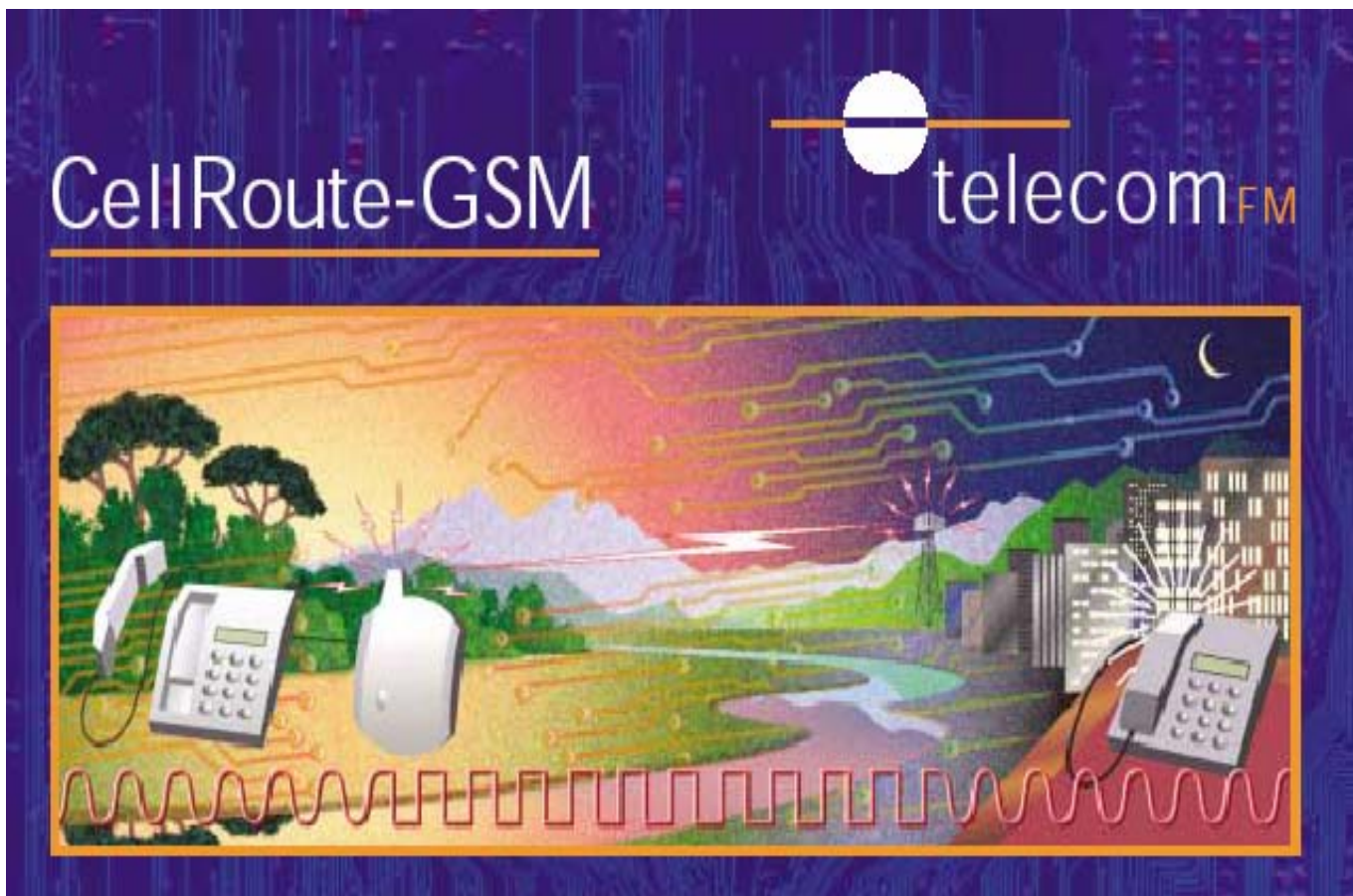


CELLROUTE

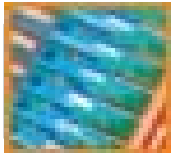
Data Connectivity



This document is for the following:

Windows 98
Windows 2000 (Professional & Server)
Windows XP (Home & Professional)
GPRS

Version .01- Dec 2004



CELL ROUTE-GSM Data Connectivity

The following manual will help you to set-up the CellRoute-GSM on your PC or laptop. Follow the instructions that apply to the version of Windows that you are running. Instructions are supplied for Windows 98, Windows 2000 (Professional and Server) and Windows XP (Home Edition and Professional).

NOTE: Only refer to the GPRS section if you have purchased a GPRS unit.

NOTE: Before beginning ensure that the CellRoute-GSM is powered up in accordance with the “getting started” section of the handbook.
Connect the data cable supplied into the RJ45 connector of the CellRoute-GSM and into the Serial port of your computer.

WINDOWS 98

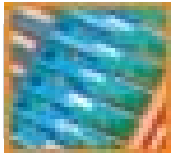
Step 1: Installation for Windows 98

From the Start Menu, click *Settings* followed by *Control Panel*



Double click *Modems*





CELL ROUTE-GSM Data Connectivity

WINDOWS 98

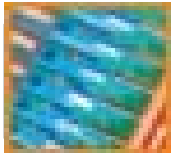
Click *Add...*



Click *Next* to auto detect the CellRoute-GSM
After a short while the following screen will be displayed

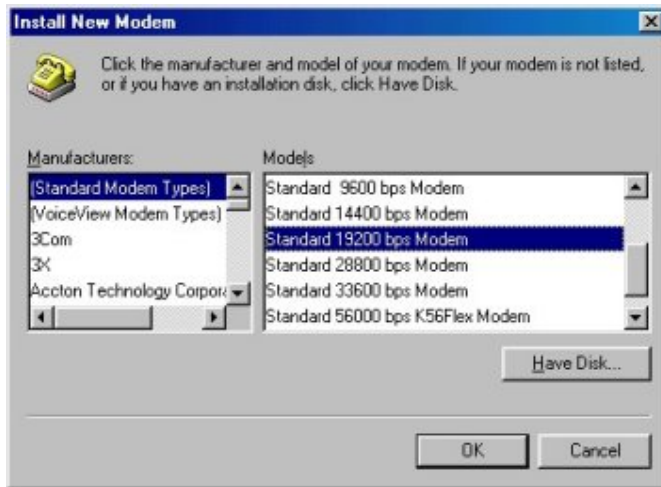


Click *Change...*



CELL ROUTE-GSM Data Connectivity

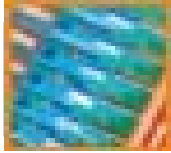
WINDOWS 98



Ensure that *Standard Modem Types* is selected on the left and click on *Standard 19200 bps Modem* on the right
Click *OK*



Click *Next*



CELL ROUTE-GSM Data Connectivity

WINDOWS 98

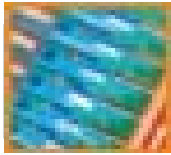


Click *Finish*



Click *OK*

The Cellroute-GSM is now installed



CELL ROUTE-GSM Data Connectivity

WINDOWS 98

Step 2: Testing the Modem Connection

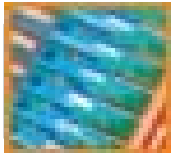
From the Start Menu, click *Settings* followed by *Control Panel*



Double click *Modems*

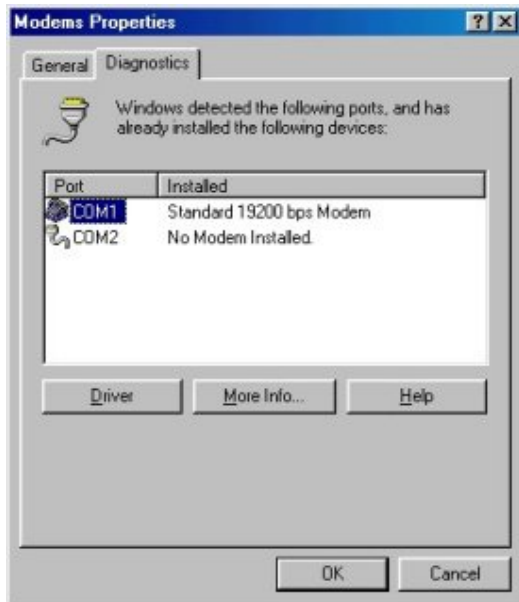


Select the *Diagnostics* tab



CELL ROUTE-GSM Data Connectivity

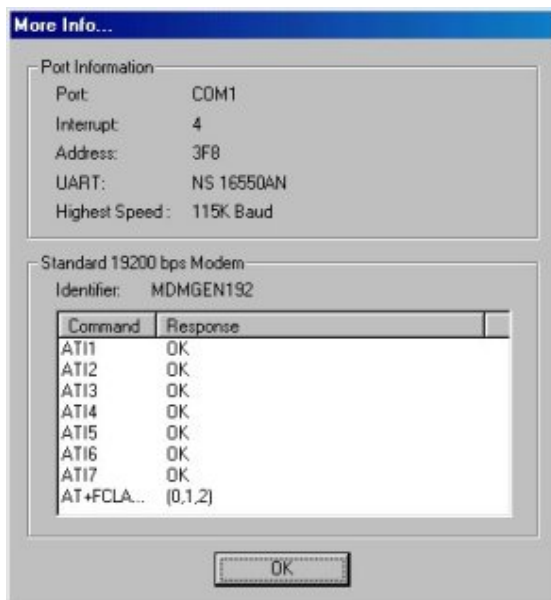
WINDOWS 98



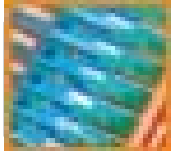
Click on the COM port for the *Standard 19200 bps Modem* and click *More Info...*

The CellRoute will switch to Data mode (alternate flashing of LEDs) automatically.

After a few seconds the following screen should appear.



If there were no warnings then the computer is successfully communicating with the Cellroute-GSM



CELL ROUTE-GSM Data Connectivity

WINDOWS 98

Step 3: Connecting to the Internet

It is assumed that an Internet account has already been set up with a service provider. You will have been given:

- Telephone number for the dial-up connection
- Username and Password

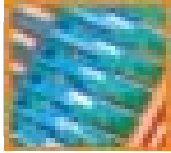
From the Start Menu, click *Programs, Accessories, Communications, Dial-up Networking*



Double Click *Make New Connection*
Click *Next*



Enter a name for the connection and ensure that *Standard 19200 bps Modem* is selected. Click *Next*



CELL ROUTE-GSM Data Connectivity

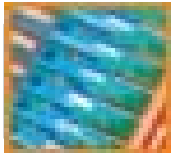
WINDOWS 98



Enter the phone number for your internet provider and click *Next*



Click *Finish*



CELL ROUTE-GSM Data Connectivity

WINDOWS 98

Double-click the connection that has just been created



Enter the Username and Password given to you by your Internet provider and click *Connect*

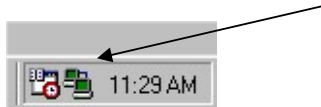
The computer will then connect to your Internet provider and log you on.

Note:

If the handset is lifted, or you are making / receiving a voice call, the CellRoute-GSM will not respond to any data commands.

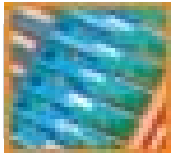
Step 4: Disconnecting from the Internet

When on-line there is a computer icon in the bottom right corner of the screen that flashes whenever data is being transferred.



To terminate the connection, right click on this icon and click on *Disconnect*. The CellRoute-GSM will then go off line and return to voice mode after a few seconds.

NOTE: - Unplugging or switching off at the mains socket will have no effect since the unit will then be powered from its internal batteries.



CELL ROUTE-GSM Data Connectivity

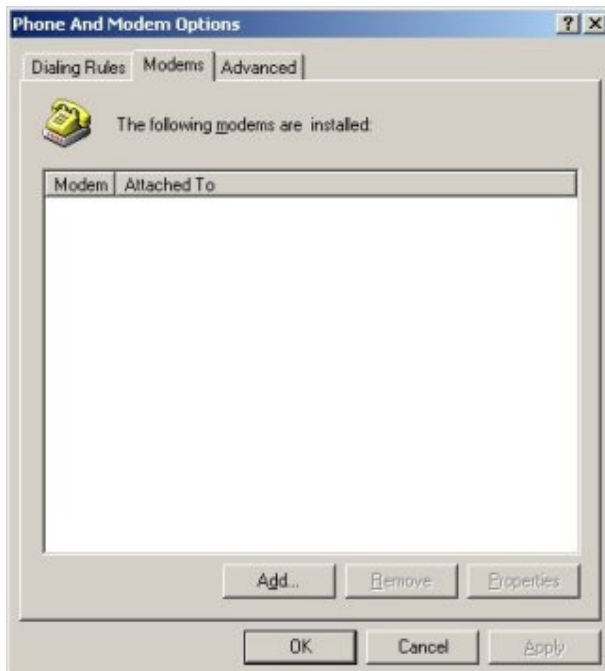
WINDOWS 2000 (Professional and Server)

Step 1: Installation For Windows 2000 (Professional & Server)

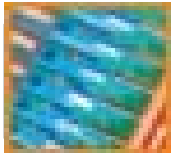
From the Start Menu, click *Settings* followed by *Control Panel*



Double click *Phone and Modem Options*



Select the Modems Tab
Click *Add...*



CELL ROUTE-GSM Data Connectivity

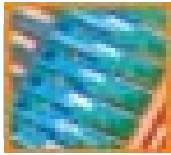
WINDOWS 2000 (Professional and Server)



Click *Next* to auto detect the CellRoute-GSM
After a short while the following screen will be displayed

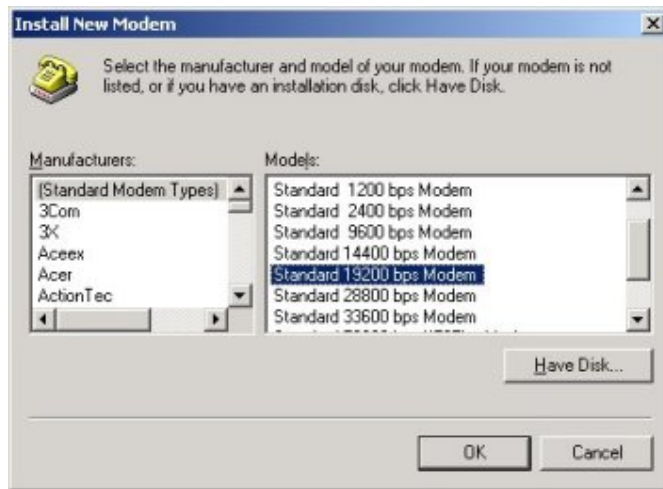


Click *Change...*



CELL ROUTE-GSM Data Connectivity

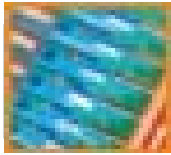
WINDOWS 2000 (Professional and Server)



Ensure that *Standard Modem Types* is selected on the left and click on *Standard 19200 bps Modem* on the right
Click *OK*



Click *Next*

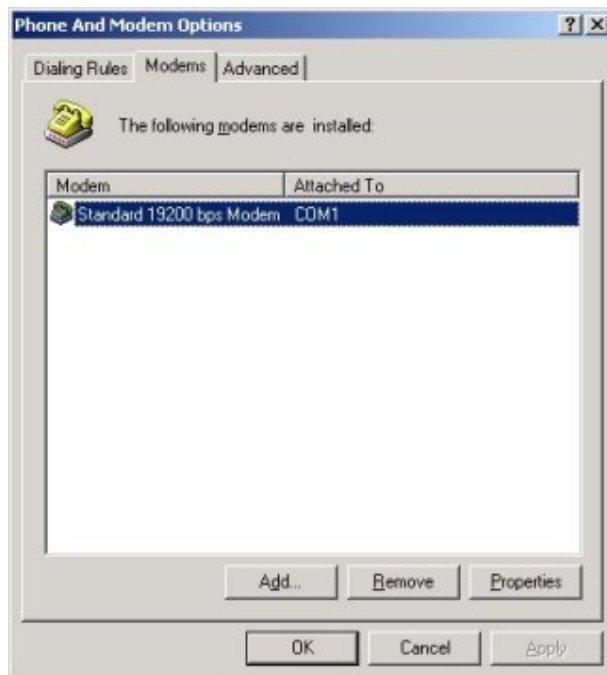


CELL ROUTE-GSM Data Connectivity

WINDOWS 2000 (Professional and Server)

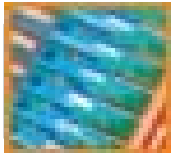


Click *Finish*



Click *OK*

The Cellroute GSM is now installed

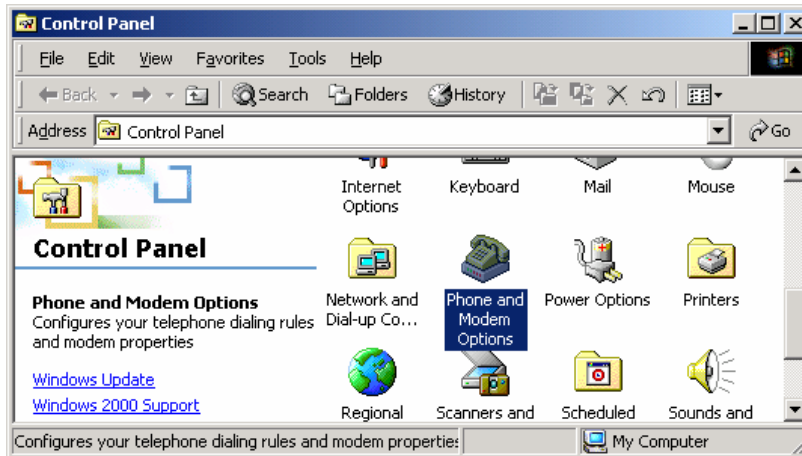


CELL ROUTE-GSM Data Connectivity

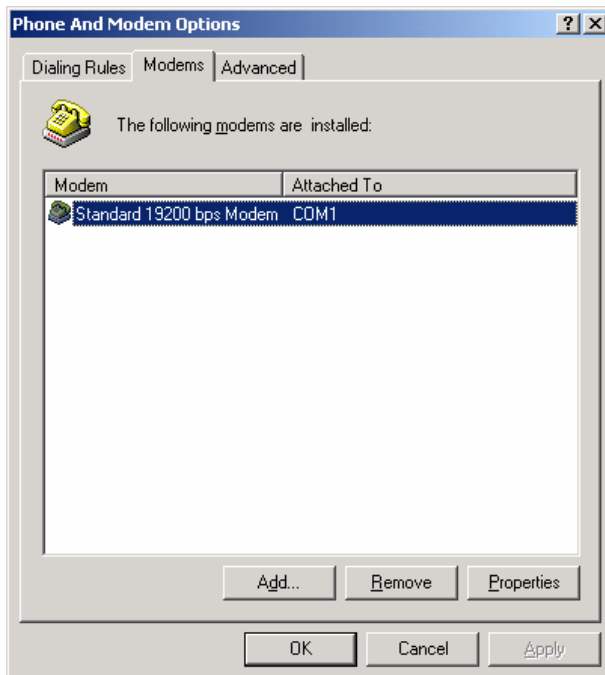
WINDOWS 2000 (Professional and Server)

Step 2: Testing the Modem Connection

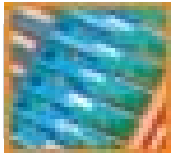
From the Start Menu, click *Settings* followed by *Control Panel*



Double click *Phone and Modem Options*

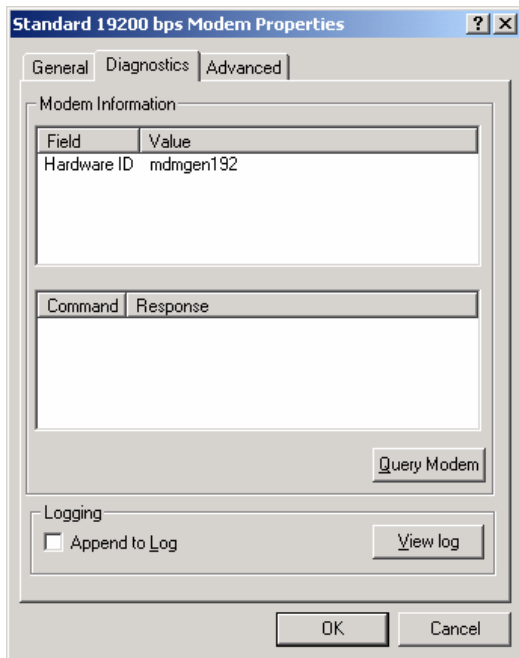


Select the *Modems* tab, click on the *Standard 19200 bps Modem* and click *Properties*



CELL ROUTE-GSM Data Connectivity

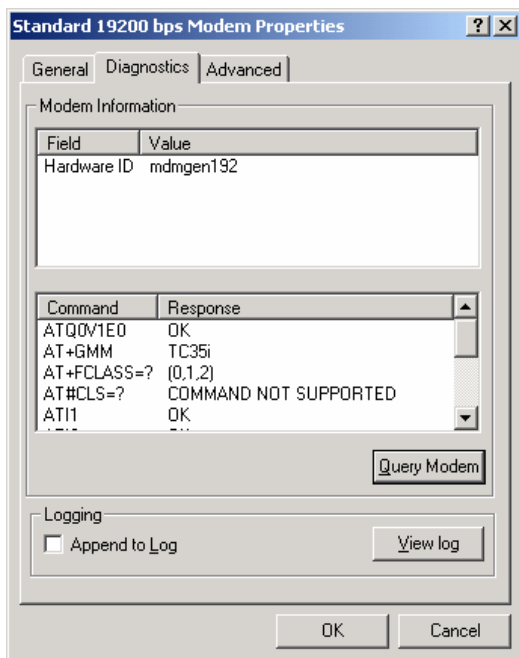
WINDOWS 2000 (Professional and Server)



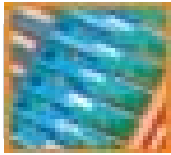
Select the *Diagnostics* tab and click on *Query Modem*

The CellRoute will switch to Data mode (alternate flashing of LEDs) automatically.

After a few seconds the following screen should appear.



If there were no warnings then the computer is successfully communicating with the Cellroute GSM



CELL ROUTE-GSM Data Connectivity

WINDOWS 2000 (Professional and Server)

Step 3: Connecting to the Internet

It is assumed that an Internet account has already been set up with a service provider. You will have been given:

- Telephone number for the dial-up connection
- Username and Password

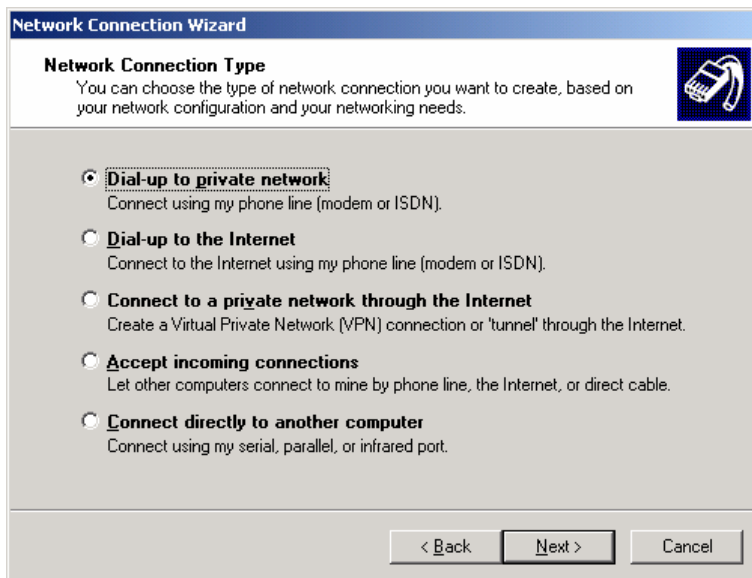
From the Start Menu, click *Settings* followed by *Control Panel*

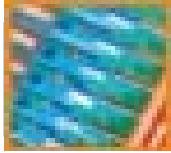


Double-click *Network and Dial-up Connections*

Double-click *Make New Connection*

Click *Next*





CELL ROUTE-GSM Data Connectivity

WINDOWS 2000 (Professional and Server)

Select *Dial-up to Private Network* and click *Next*
If the following screen is displayed:

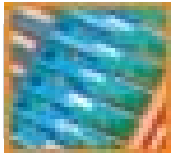


Ensure that only the *Standard 19200bps Modem* is ticked.
Click *Next*

Enter the phone number for your internet provider and click *Next*

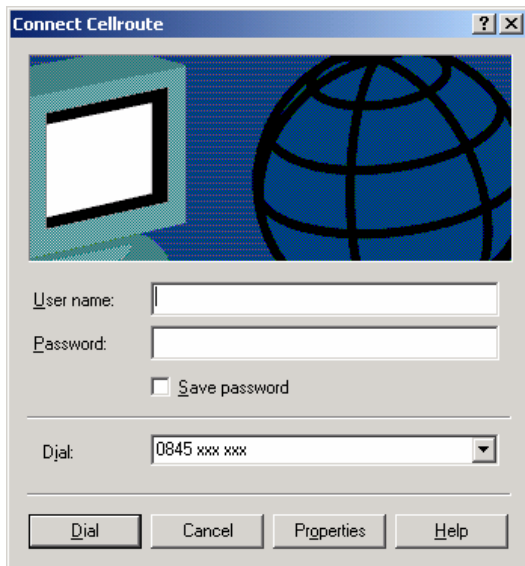


Enter a name for the connection and click *Finish*



CELL ROUTE-GSM Data Connectivity

WINDOWS 2000 (Professional and Server)



Enter the Username and Password given to you by your Internet provider and click *Dial*

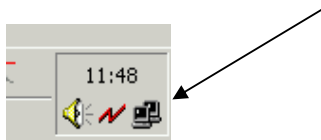
The computer will then connect to your Internet provider and log you on.

Note:

If the handset is lifted, or you are making / receiving a voice call, the CellRoute-GSM will not respond to any data commands.

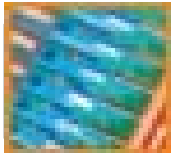
Step 4: Disconnecting from the Internet

When on-line there is a computer icon in the bottom right corner of the screen that flashes whenever data is being transferred.



To terminate the connection, right click on this icon and click on *Disconnect*. The CellRoute-GSM will then go off line and return to voice mode after a few seconds.

NOTE: - Unplugging or switching off at the mains socket will have no effect since the unit will then be powered from its internal batteries.

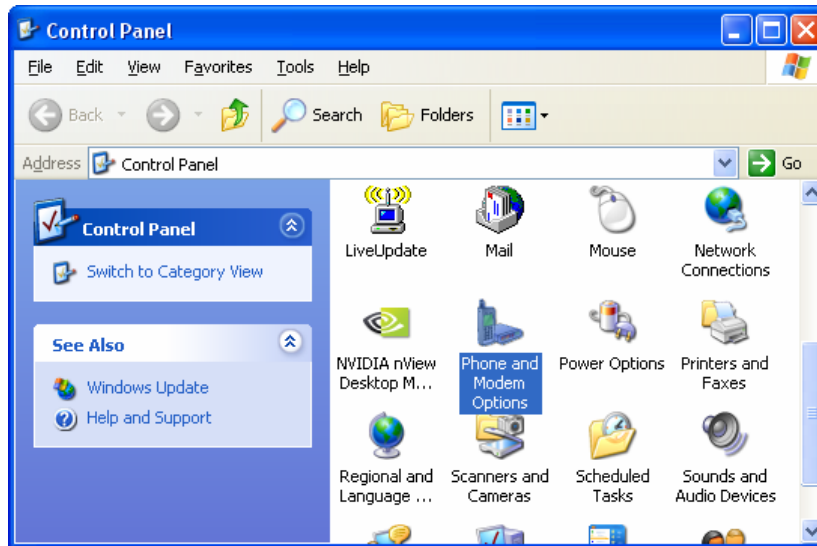


CELL ROUTE-GSM Data Connectivity

WINDOWS XP (Home and Professional)

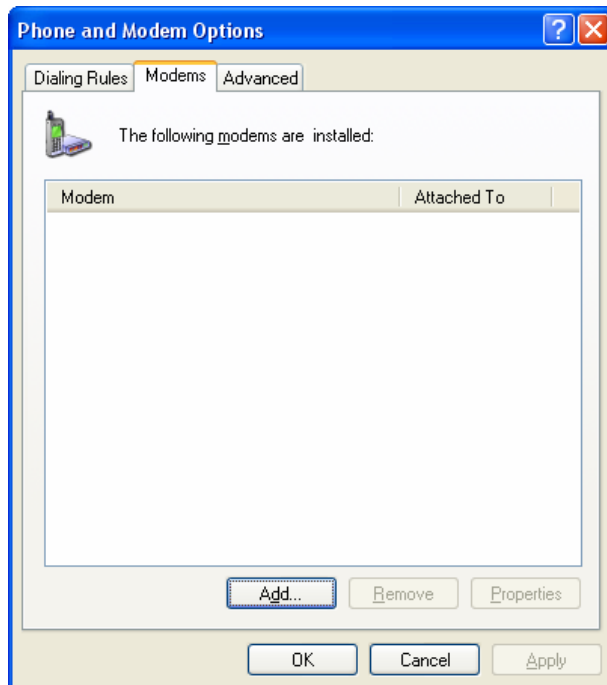
Step 1: Installation for XP (Home & Professional)

From the Start Menu, click *Control Panel*

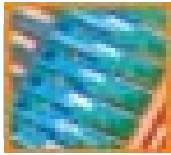


Note: If the screen displayed differs to that shown here click *Switch to Classic View*

Double click *Phone and Modem Options*



Select the Modems Tab
Click *Add...*

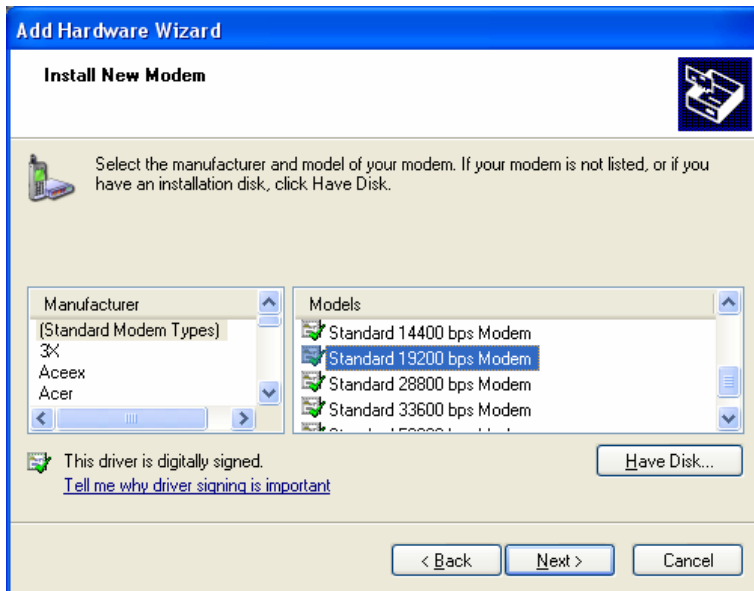


CELL ROUTE-GSM Data Connectivity

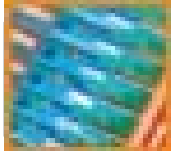
WINDOWS XP (Home and Professional)



Select *Don't detect my modem, I will select it from a list*
Click *Next*

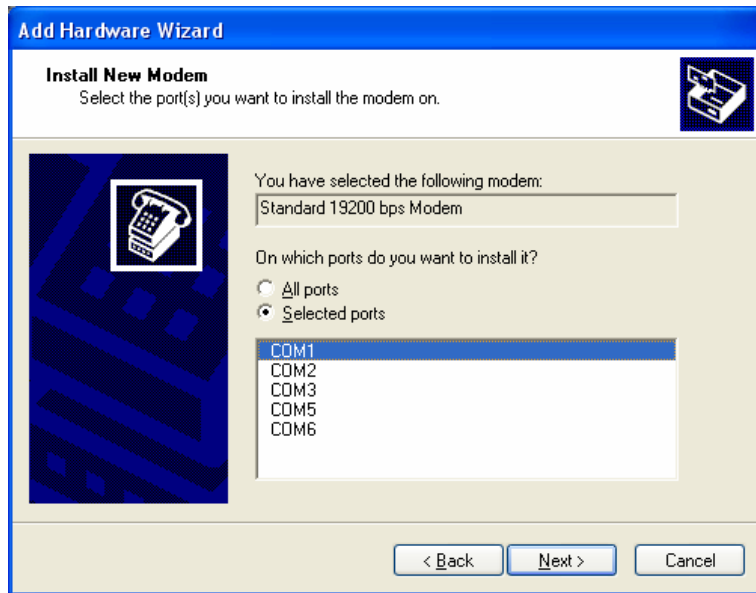


Ensure that *Standard Modem Types* is selected on the left and click on *Standard 19200 bps Modem* on the right
Click *Next*

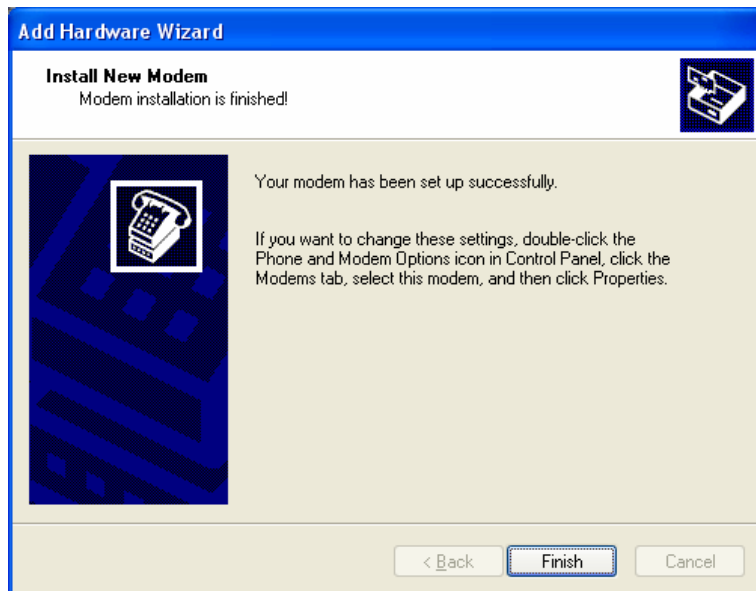


CELL ROUTE-GSM Data Connectivity

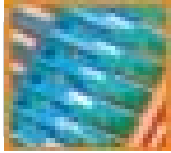
WINDOWS XP (Home and Professional)



Select the serial port that the CellRoute is attached to and click *Next*

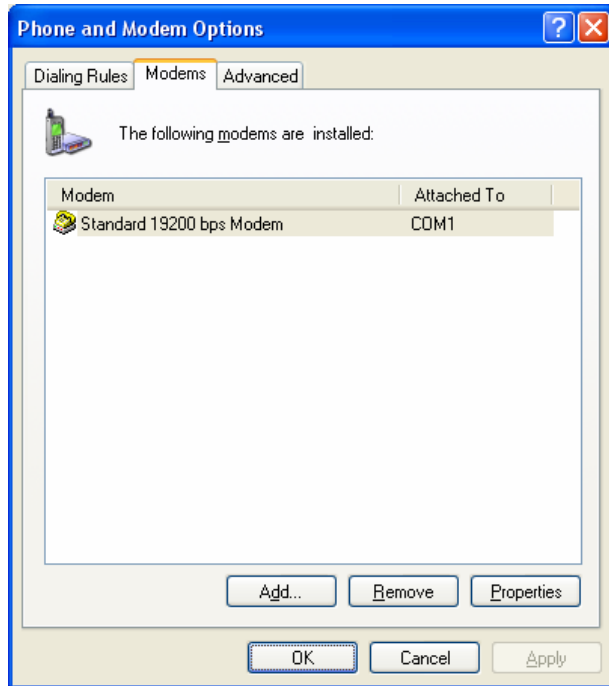


Click *Finish*



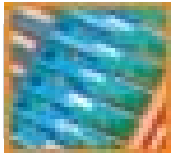
CELL ROUTE-GSM Data Connectivity

WINDOWS XP (Home and Professional)



Click *OK*

The Cellroute GSM is now installed

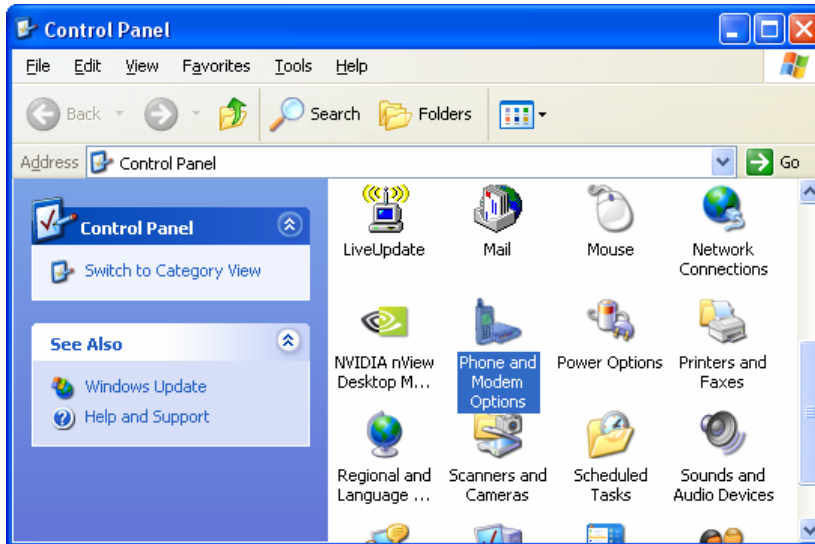


CELL ROUTE-GSM Data Connectivity

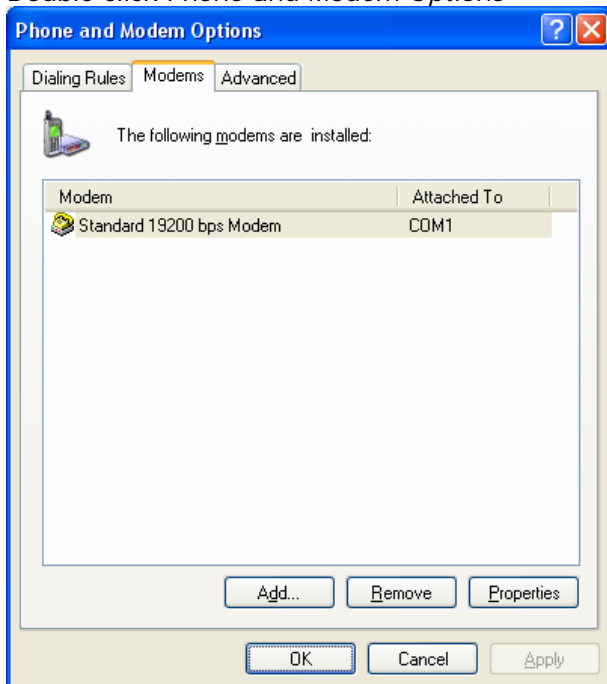
WINDOWS XP (Home and Professional)

Step 2: Testing the Modem Connection

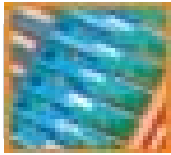
From the Start Menu, click *Control Panel*



Note: If the screen displayed differs to that shown here click *Switch to Classic View*
Double click *Phone and Modem Options*

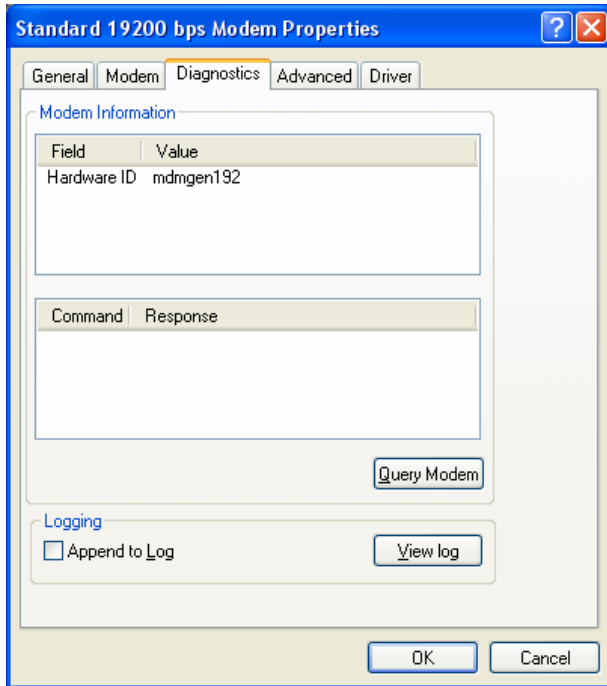


Select the *Modems* tab, click on the *Standard 19200 bps Modem* and click *Properties*



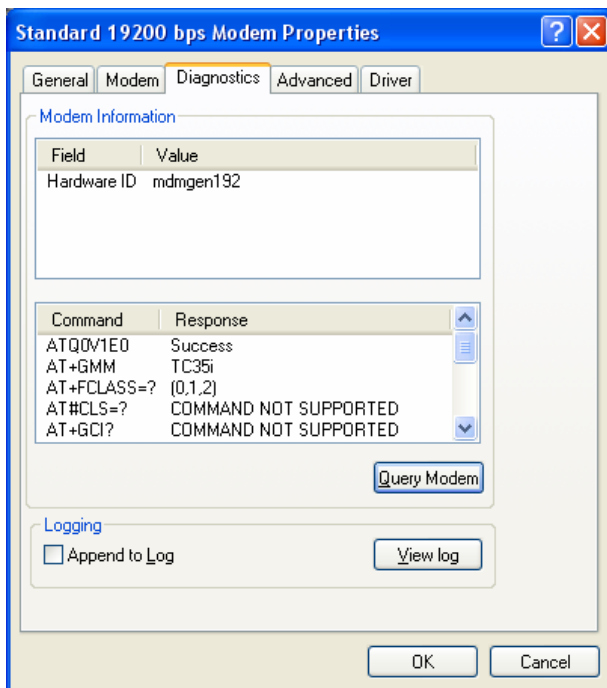
CELL ROUTE-GSM Data Connectivity

WINDOWS XP (Home and Professional)

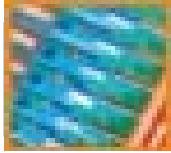


Select the *Diagnostics* tab and click on *Query Modem*

The CellRoute will switch to Data mode (alternate flashing of LEDs) automatically. After a few seconds the following screen should appear.



If there were no warnings then the computer is successfully communicating with the Cellroute GSM



CELL ROUTE-GSM Data Connectivity

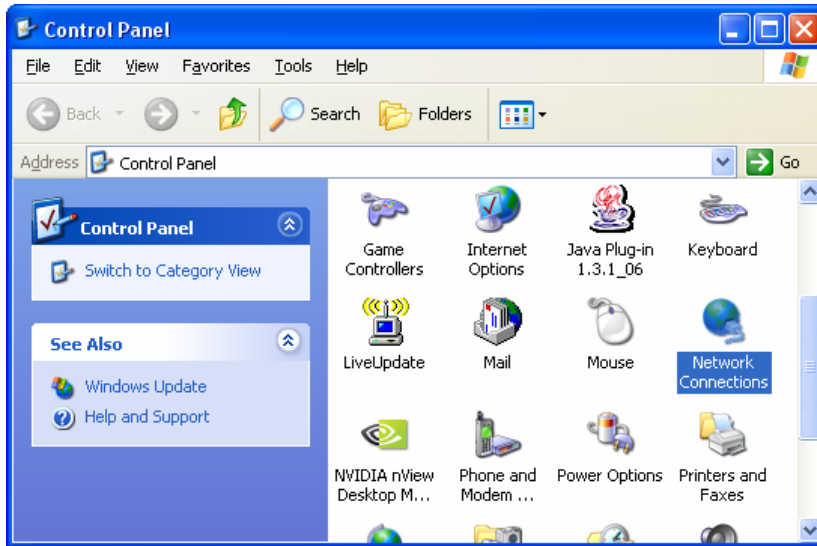
WINDOWS XP (Home and Professional)

Step 3: Connecting to the Internet

It is assumed that an Internet account has already been set up with a service provider. You will have been given:

- Telephone number for the dial-up connection
- Username and Password

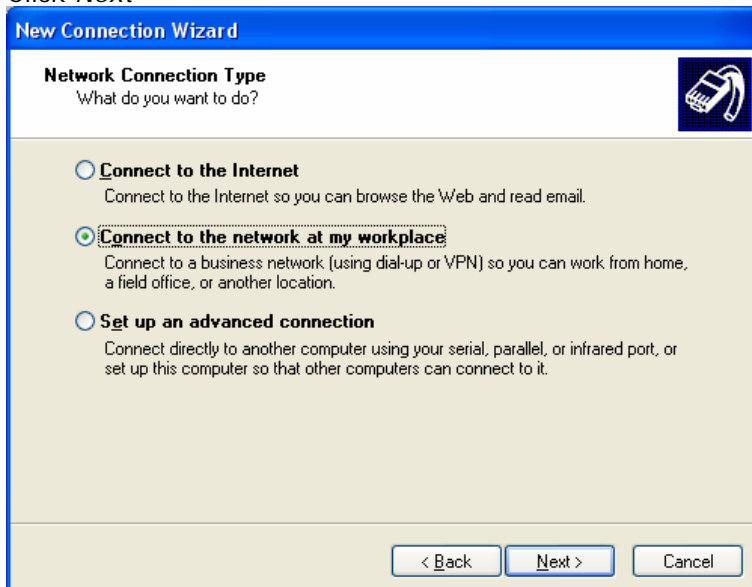
From the Start Menu, click *Control Panel*



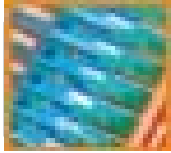
Double click *Network Connections*

Click *Create A New Connection*

Click *Next*

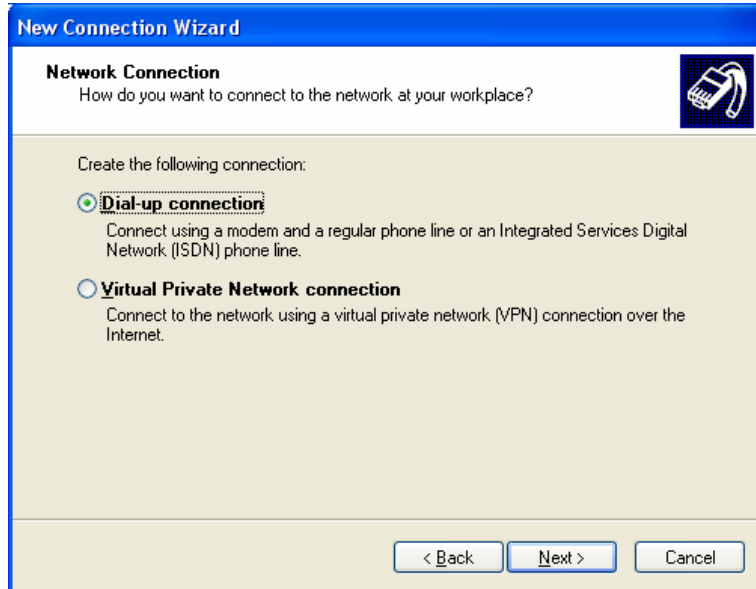


Select *Connect to the network at my workplace* and click *Next*



CELL ROUTE-GSM Data Connectivity

WINDOWS XP (Home and Professional)



Click *Dial-up connection* and click *Next*

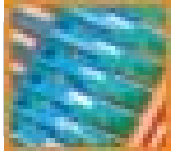
Click *Next*



Enter a name for the connection and click *Next*

Enter the phone number for your internet provider and click *Next*

Click *Finish*



CELL ROUTE-GSM Data Connectivity

WINDOWS XP (Home and Professional)



Enter the Username and Password given to you by your Internet provider and click *Dial*

The computer will then connect to your Internet provider and log you on.

Note:

If the handset is lifted, or you are making / receiving a voice call, the CellRoute-GSM will not respond to any data commands.

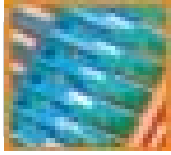
Step 4: Disconnecting from the Internet

When on-line there is a computer icon in the bottom right corner of the screen that flashes whenever data is being transferred.



To terminate the connection, right click on this icon and click on *Disconnect*. The CellRoute-GSM will then go off line and return to voice mode after a few seconds.

NOTE: - Unplugging or switching off at the mains socket will have no effect since the unit will then be powered from its internal batteries.



GPRS Setup

Installation for GPRS

NOTE: Only refer to this GPRS section if you have purchased a GPRS unit.

The following are additional steps that need to be carried out in order to use the CellRoute to connect via GPRS.

To connect to the internet via GPRS the CellRoute requires a GPRS enabled SIM Card and the following information must be provided by the Network Operator:

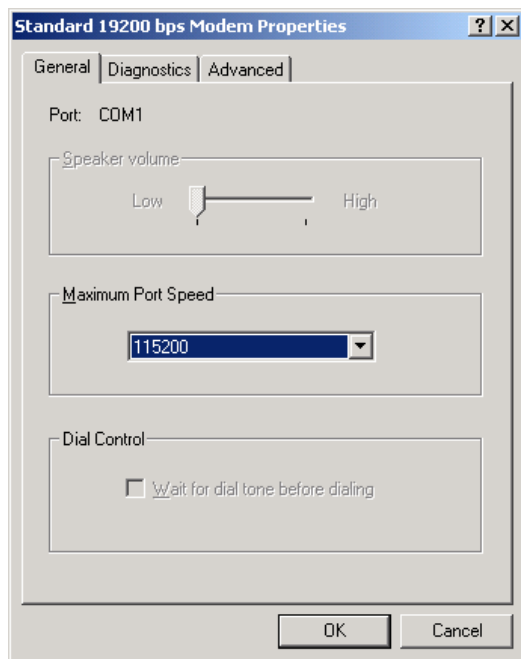
- Access Point Name (APN)
- Username
- Password

Step 1: Increase port speed and add Advanced Settings

Click *Start, Settings, Control Panel*

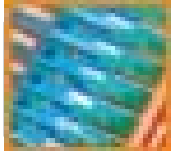
Double-click *Phone and Modem Options*

Click on the *Standard 19200 bps Modem* and click *Properties*

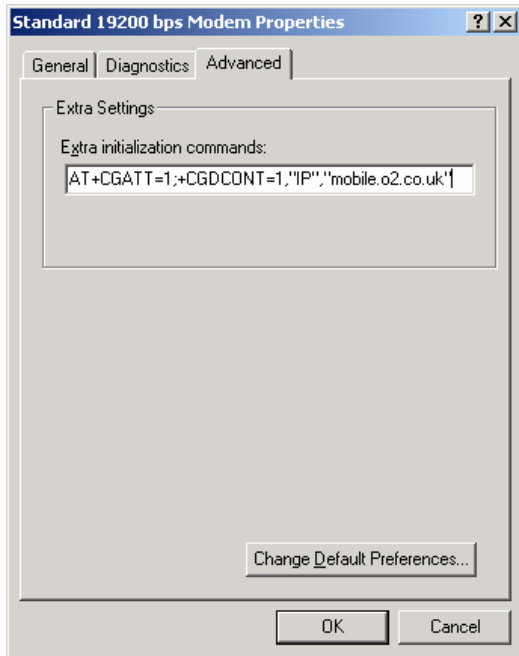


Change the *Maximum Port Speed* setting to **115200**

Click on the *Advanced* tab



GPRS Setup



Under Extra initialisation commands enter the following text exactly as it appears here:

```
AT+CGATT=1 ; +CGDCONT=1 , " IP" , " APN"
```

Where **APN** is the access point name provided by the Network operator.

Click *OK* to confirm the settings

Click *OK* to exit the Phone and Modem options screen.

Step 2: Configure connection

Refer to the "Connecting to the Internet" section of the manual that applies to the version of Windows that you are using for instructions on setting up an internet connection. Right-click the connection and choose *Properties*. Click *Configure* and change the modems Maximum Speed to 115200bps. Click *OK*.

When prompted for a Username and Password enter the Username and Password provided by the Network Operator. When prompted for a phone number use the following number for a GPRS connection exactly as it appears here:

991#**