

TFM GSMRoute BRI

Quick Installation Guide

Connecting to ISDN Lines



- Basic Rate ISDN can be connected to the GSMRoute-BRI.
 - Auto detects Point to Point or Point to Multipoint.
 - Auto detects if ISDN circuit is connected.
 - The PBX does not require programming when GSMRoute-BRI is connecting to ISDN Lines.
 - The GSMRoute-BRI will require programming if not connected to ISDN lines.
- (See Unmanaged Local Programming Guide).

GSMRoute-BRI Overview



- **Physical Specification**
- **Length 286 mm**
- **Breadth 208 mm**

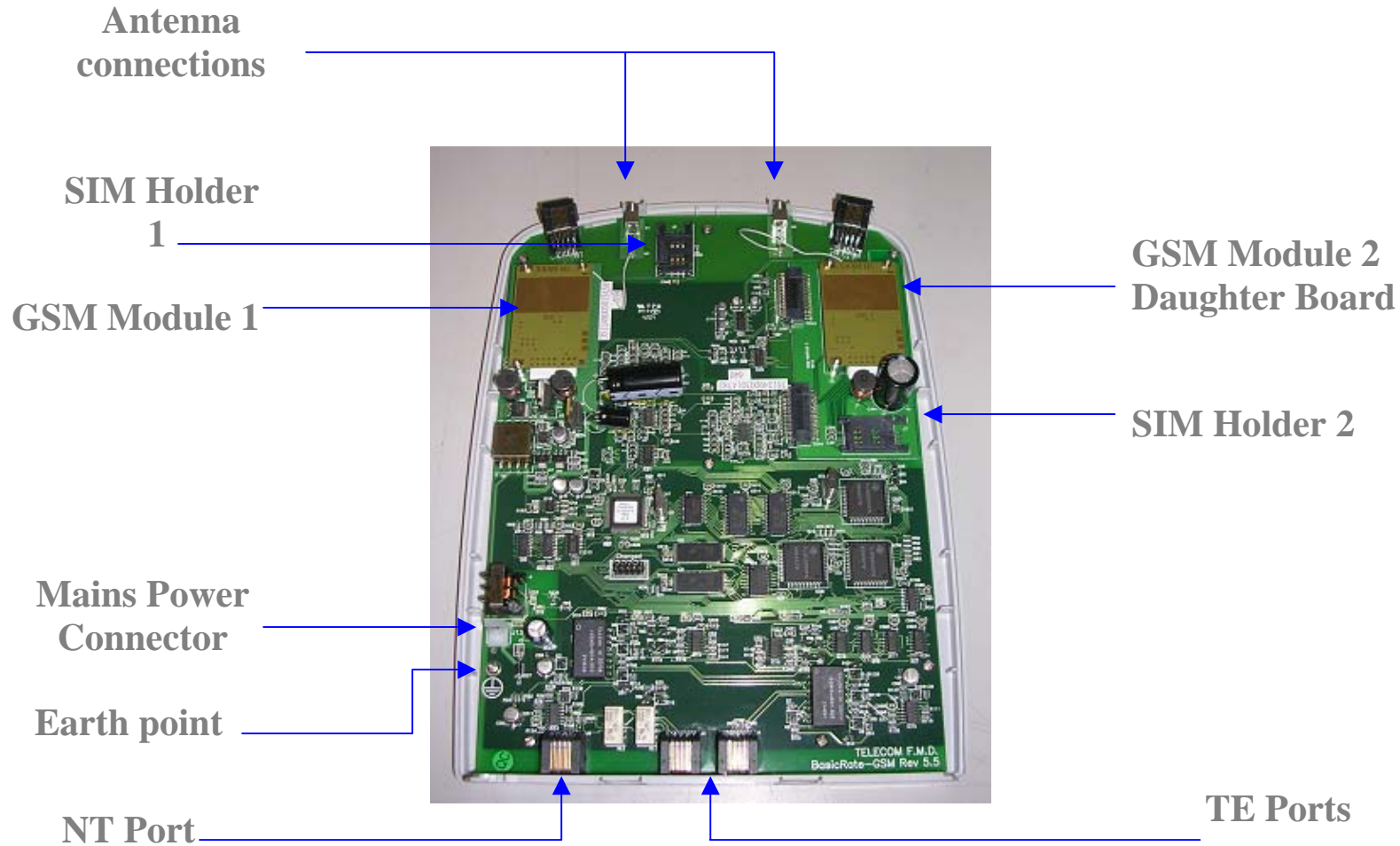
- **Height 52 mm**

- **Weight (unit) 900g (GSM-Route, as photo.)**

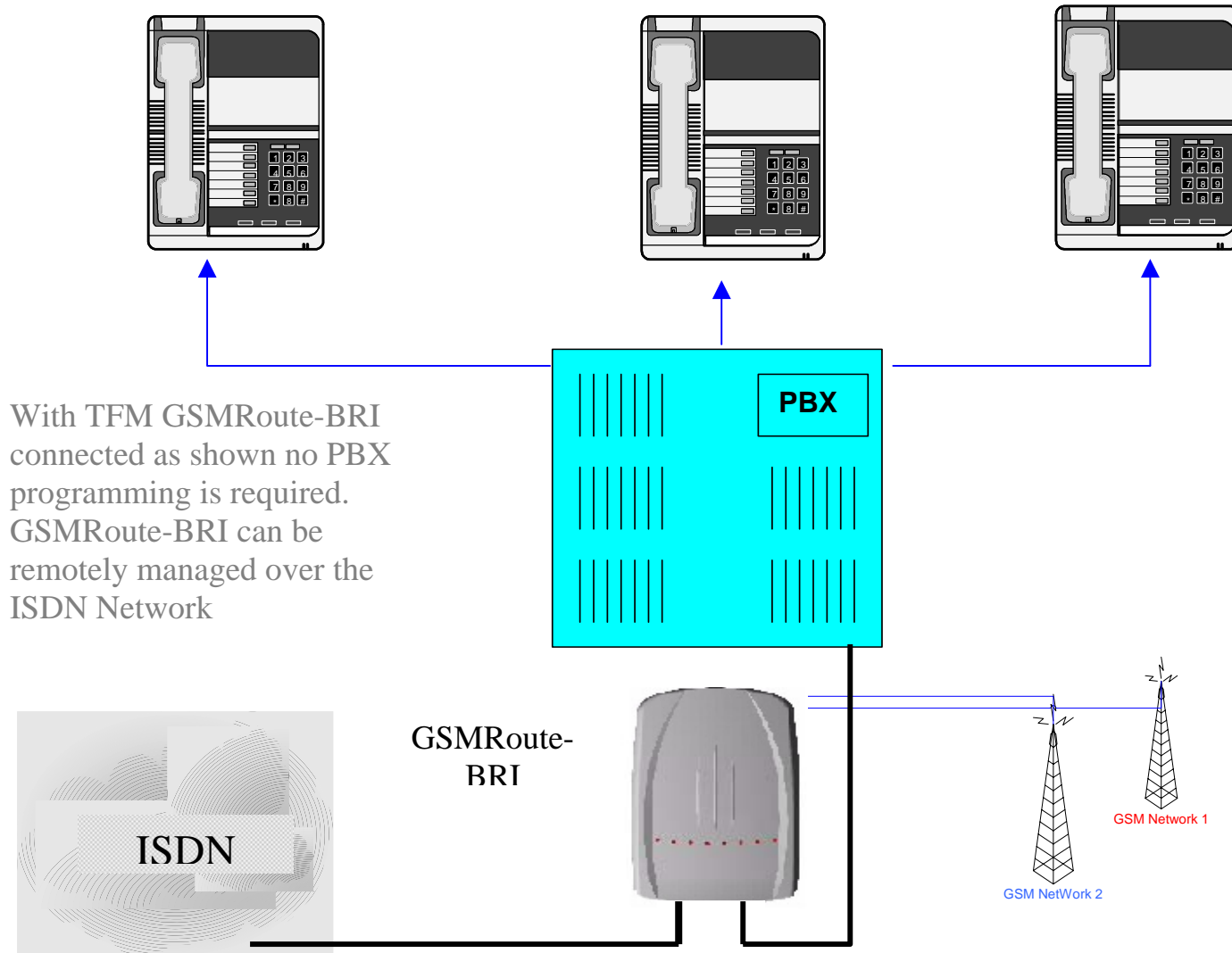
- **Weight (total) 2.08kg (with power supply, antennae, packaging etc.)**



The Main Components



ISDN PBX Connection



With TFM GSMRoute-BRI connected as shown no PBX programming is required. GSMRoute-BRI can be remotely managed over the ISDN Network

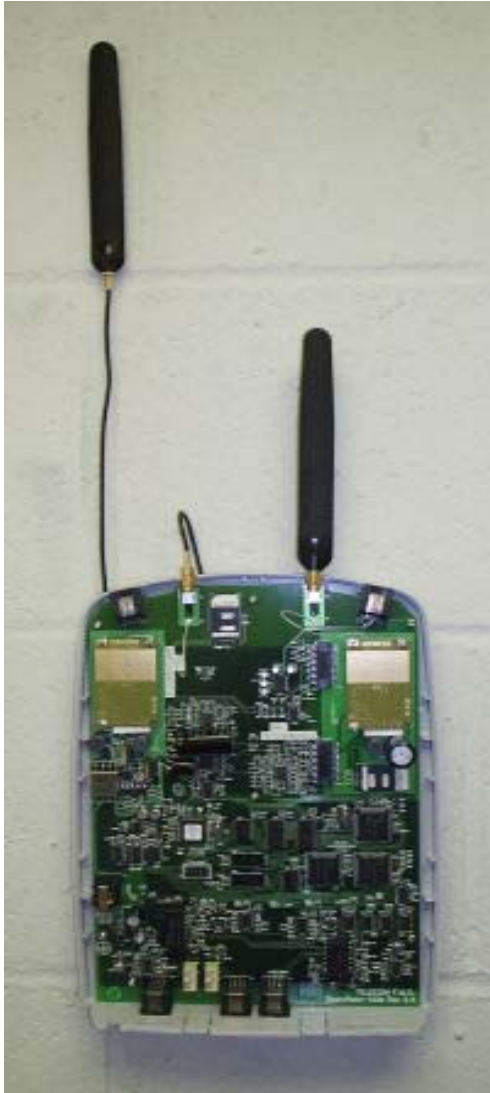
Positioning the GSMRoute-BRI



- Find a location with the strongest signal strength.
- Fix unit to wall using template provided.



Connecting The Antenna

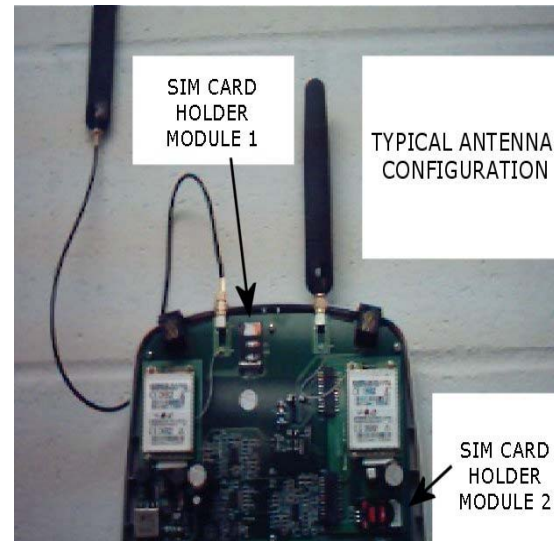


- Connect Antenna's
- The Antenna's must be 330mm apart horizontally

Install SIM Cards

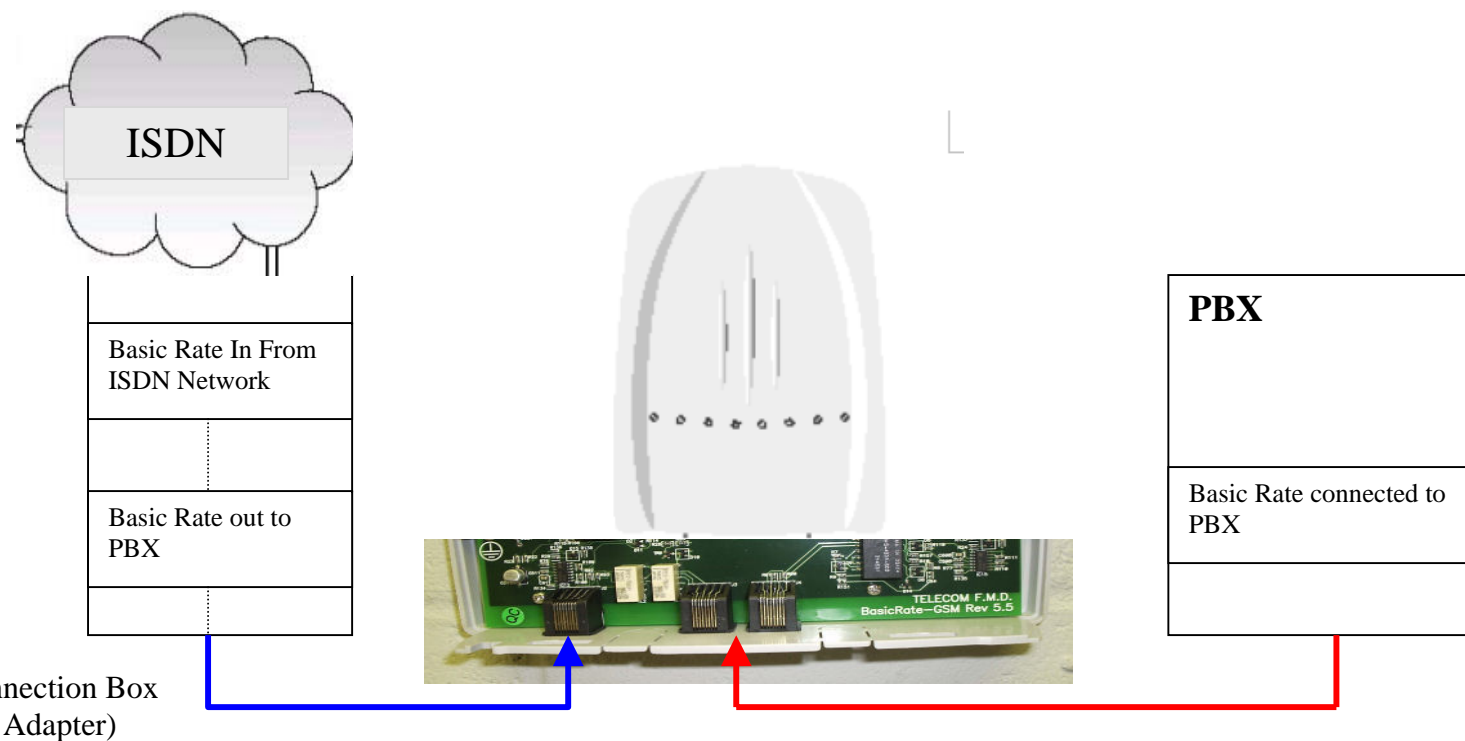


- Install SIM Cards into the SIM Holders.



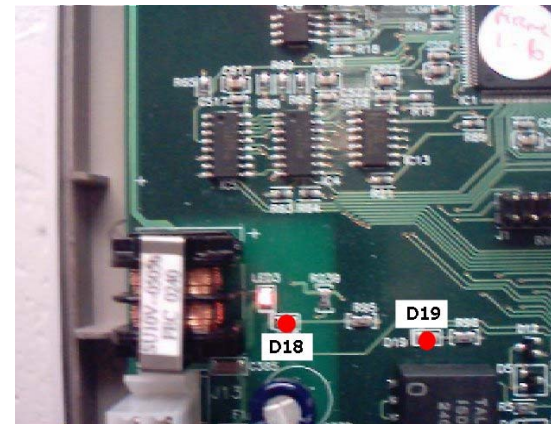
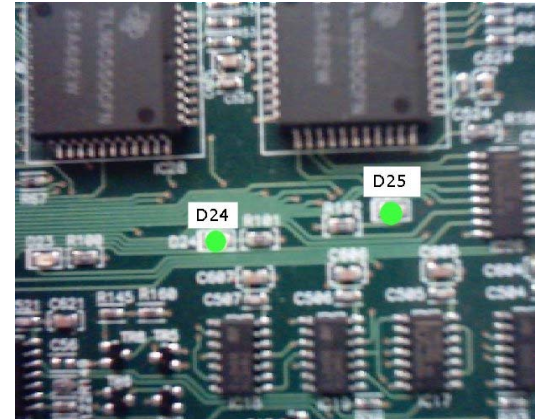
Connecting Lines to GSMRoute

- Identify the ISDN connection box. (Terminal Adapter)
- Identify the circuit to connect on GSMRoute-BRI.
- Connect Basic Rate from ISDN connection box to the NT RJ45 position on the GSMRoute-BRI. (**BLUE LINE**)
- Connect one end of the RJ45 cable to the TE port of GSMRoute-BRI and the other end to the ISDN port of the PBX. (**RED LINE**)



Powering the GSMRoute-BRI

- Connect Antenna's & SIM(S)
- Connect Earth cable
- Connect Power to unit.
- LED 3 Power indicator.
- LEDs 24 & 25 (Green) will come on and flash 75ms/3s On/Off when connected successfully to the GSM Network.
- LED 18 will flash on/off giving signal strength of module 1 once logged on.
- LED 19 will flash on/off giving signal strength of module 2 once logged on.
- If the above LEDs 24 or 25 are not flashing as above then check for PIN lock or connection



Powering the GSMRoute-BRI

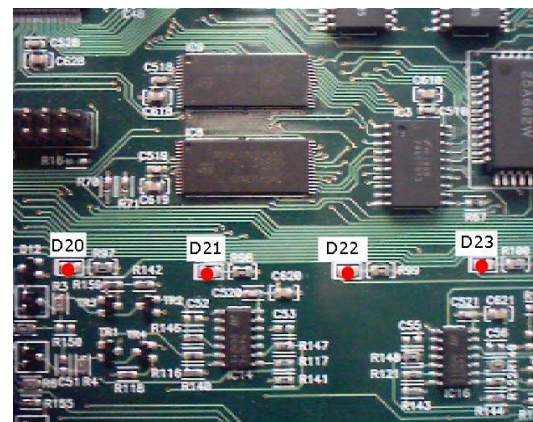
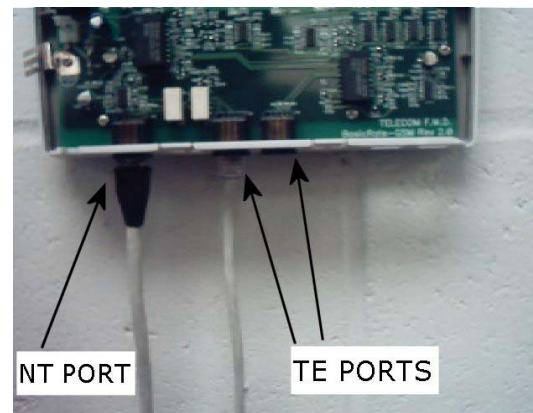


Connect Basic rate from ISDN connection box to the NT RJ45 position on the GSMRoute- BRI.

LEDs 20 & 21 (RED) will come on and flash 75ms/3s On/Off when connected successfully to the ISDN Network.

Connect one end of the RJ45 cable to the TE port of GSMRoute-BRI and the other end to the ISDN port of the PBX.

LEDs 22 & 23 (RED) will come on and flash 75ms/3s On/Off when connected successfully to the PBX
If the above LEDs are not flashing then check connectivity



Calling The GSMRoute-BRI Home



Programming Via a Local Digital Management Centre If Applicable (ISDN circuit Connected)

If the unit is to be remotely managed, contact your designated Remote Management Center and inform them as to the template to be used. TFM UK 00441753745000

When you initiate a call home either connect your ISDN phone to the TE port direct, or access the PBX and proceed with the following:

Off-hook

Dial '0000' or Dial '0##1'

On-hook

This will dial the call home number that is in the configuration map.

When connected the two Green Status LED's 24 & 25 will flash intermittently indicating that data is being transfer to and from the device during the programming sequence. LED 24 represents transmitted data, LED 25 represents receiving data. Once the programming sequence is complete the Green Status LEDs will return to reflecting the modules' status.

The GSMRoute-BRI is now ready to use

Connection to ISDN Trunk Ports (Fixed Line Mode)

Connection to ISDN Trunk Ports (Fixed Line Mode)

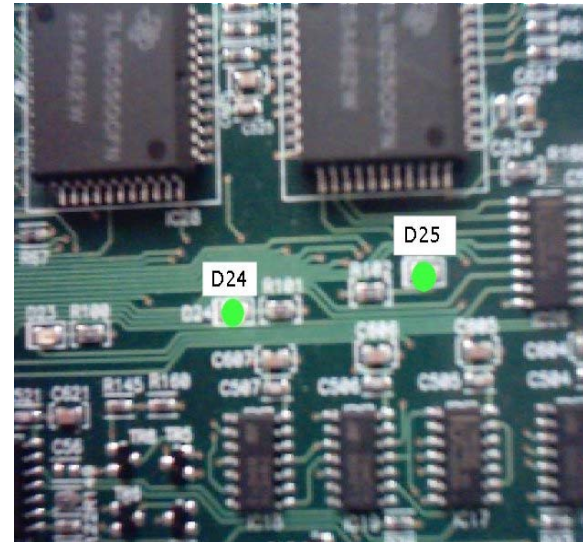


- This mode is used when an ISDN circuit is not available.
- The unit would have detected no ISDN circuit
- In this mode the unit can be used on any ISDN PBX that has a basic Rate trunk card or spare ISDN trunk ports available.
- Connection is made to the TE side of the GSMRoute-BRI to the ISDN trunk port of the PBX.
- In this mode the PBX will require programming to route the desired calls to the GSMRoute-BRI.

Connection to ISDN Trunk Ports

Fixed Line Mode

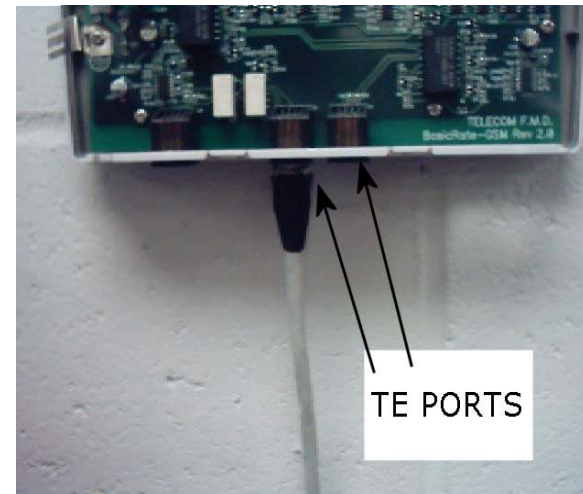
- Connect Antenna's & SIM(S)
- Connect Earth cable
- Connect Power to unit.
- LED 3 Power indicator.
- LEDs 24 & 25 (Green) will come on and flash 75ms/3s On/Off when connected successfully to the GSM Network.
- If the above LEDs are not flashing as above then check for PIN lock or connection



Connection to ISDN Trunk Ports

Fixed Line Mode

- Connect one end of the RJ45 cable to the TE port of GSMRoute-BRI and the other end to the ISDN trunk port of the PBX.
- LEDs 22 & 23 (RED) will come on and flash 75ms/3s On/Off when connection to the PBX is successful.
- If the above LEDs are not flashing then check connections



The GSM-Route BRI is now ready to use

