

OneStream GBRI Quick Start Guide

Version 1

This guide gives a basic overview of installing and programming the OneStream GBRI to route calls between PBX Trunk (S0) ports and GSM. For more information please refer to the **OneStream Hardware Installation Guide** and **OneStream Programming Guide** which are both included with the unit.

1 Hardware Installation

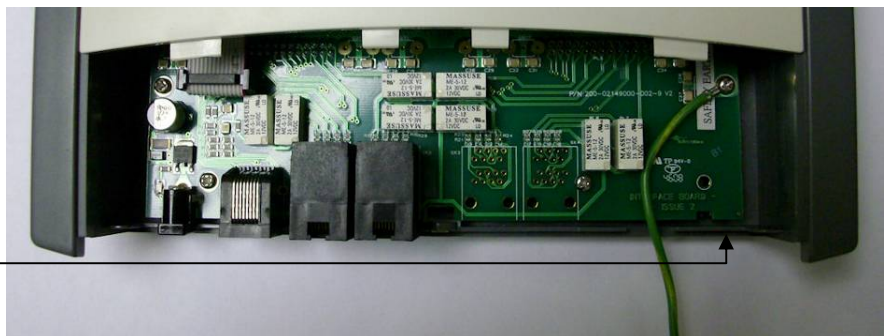
1. Insert SIM Cards and attach Antennae:



2. Take the bottom cover off by removing the small screw at the bottom of the unit and sliding the cover downwards



3. Connect the Safety Earth Ground



OneStream GBRI Quick Start Guide

4. Replace the bottom cover by sliding it back upwards and replacing the screw.



5. Connect the first TE port on the OneStream to an available Trunk (S0) Port on the PBX.



6. Connect the power to the unit and wait for the Red LED to go out.



2 Programming

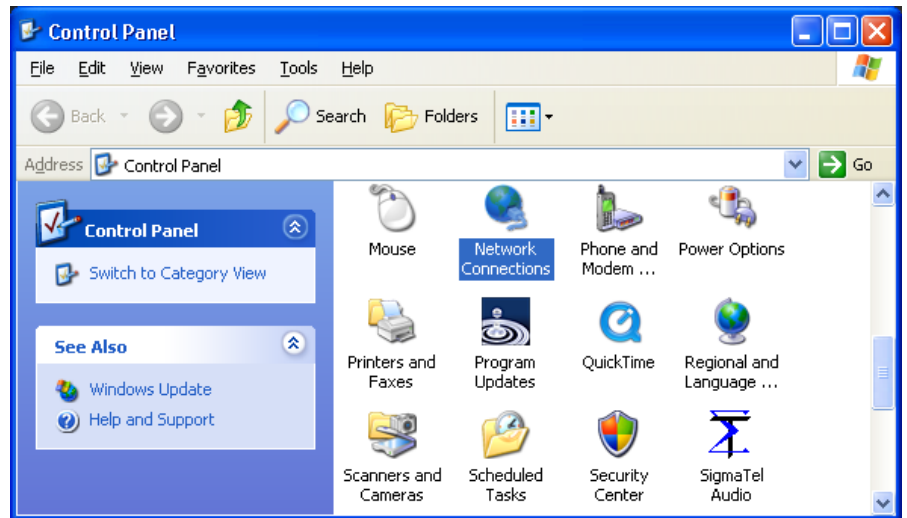
By default:

When OneStream starts up, it will try to find a DHCP Server to obtain an IP Address automatically. If it does not find a DHCP server, it will use its default IP Address of **192.168.0.1**.

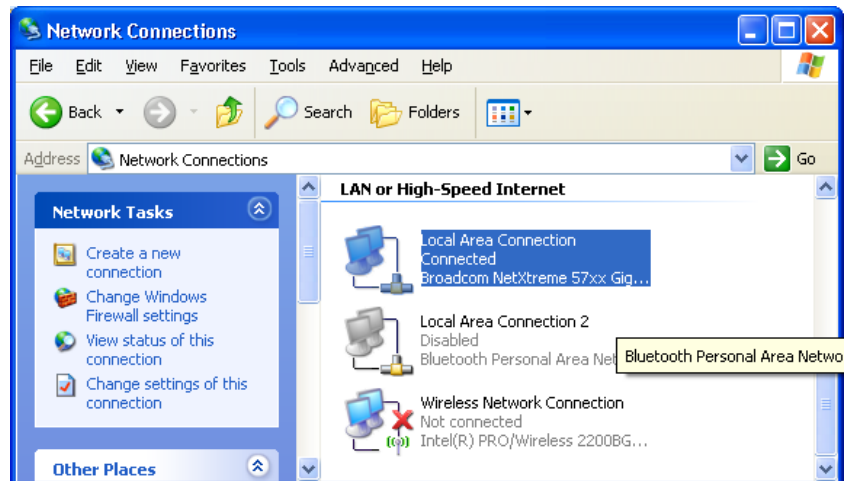
2.1 Setting up your PC

In order to access the OneStream Web Interface and program the unit your PC must be set to a compatible IP Address e.g. 192.168.0.2. To change the IP Address of your PC:

1. Click on the **Start** menu, **Control Panel** (if you do not see the display like this then click on "Switch to Classic View"):

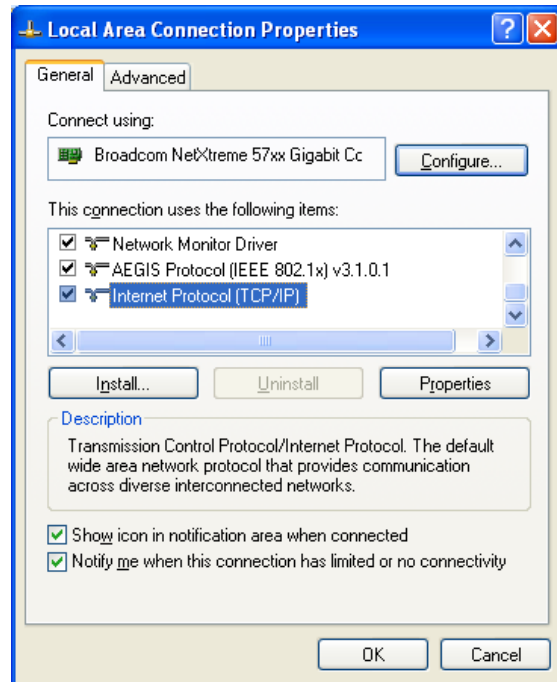


2. Double-click on **Network Connections**:



OneStream GBRI Quick Start Guide

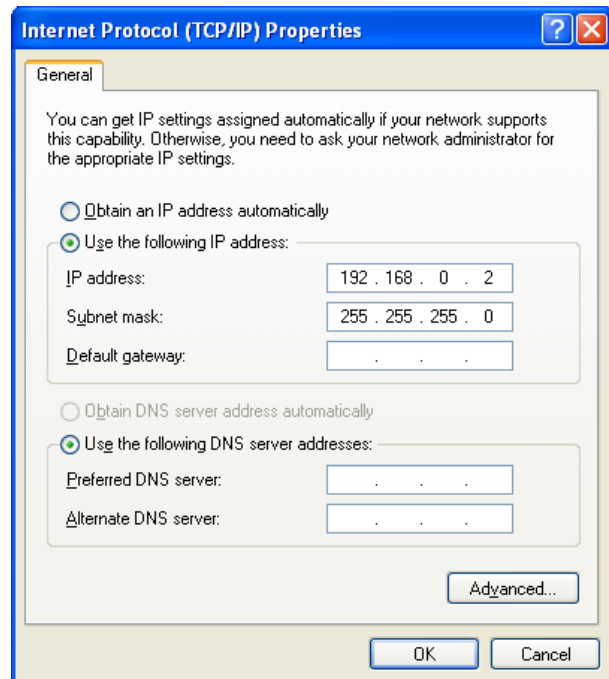
3. Right-click the **Local Area Connection** icon and click **Properties**:



4. Click on the **Internet Protocol (TCP/IP)** entry and click the **Properties** button.

Click the **Use the following IP address** option and fill in the details as shown here:

IP Address: **192.168.0.2**
Subnet Mask: **255.255.255.0**



Click the **OK** button to exit the Internet Protocol Properties window

Click the **Close** button to exit the Local Area Connection Properties window

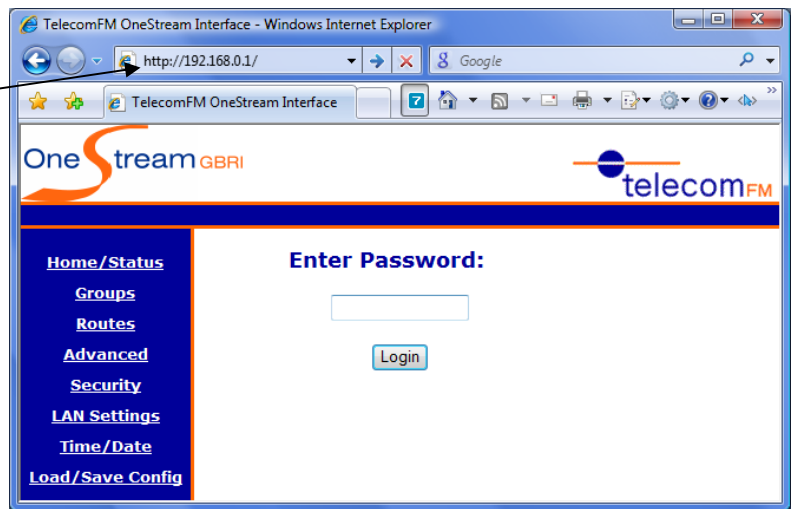
2.2 Editing the OneStream Programming

1. Connect one end of a **Crossover (X-Over) Ethernet Cable** to the LAN port of the OneStream:

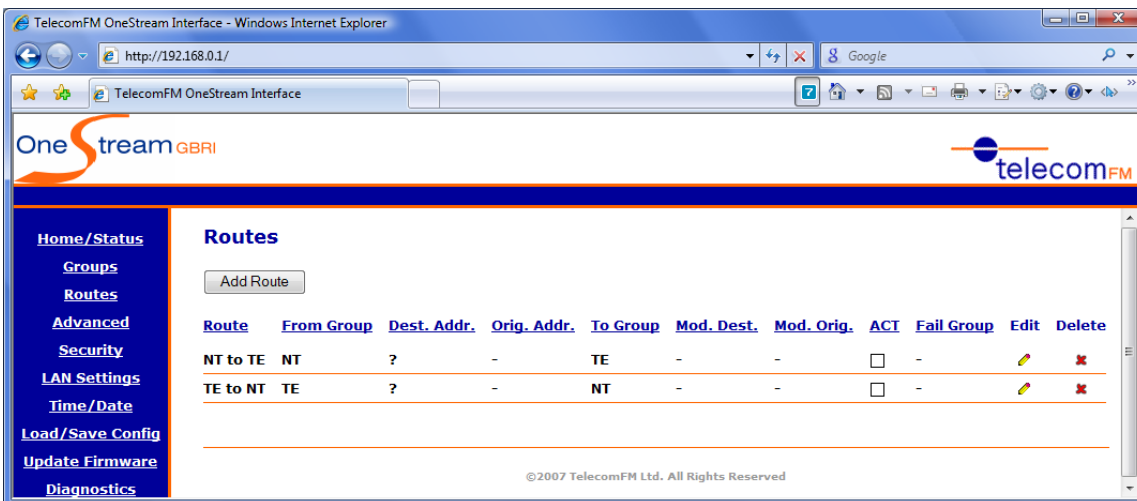



2. Connect the other end of the Crossover Ethernet cable to the LAN port of your computer.
3. Open Internet Explorer web browser on your PC.

4. In the Address Bar of the Internet Explorer window type the IP Address of the OneStream unit **192.168.0.1** and press the Enter key. You will see the Login screen for the OneStream unit:

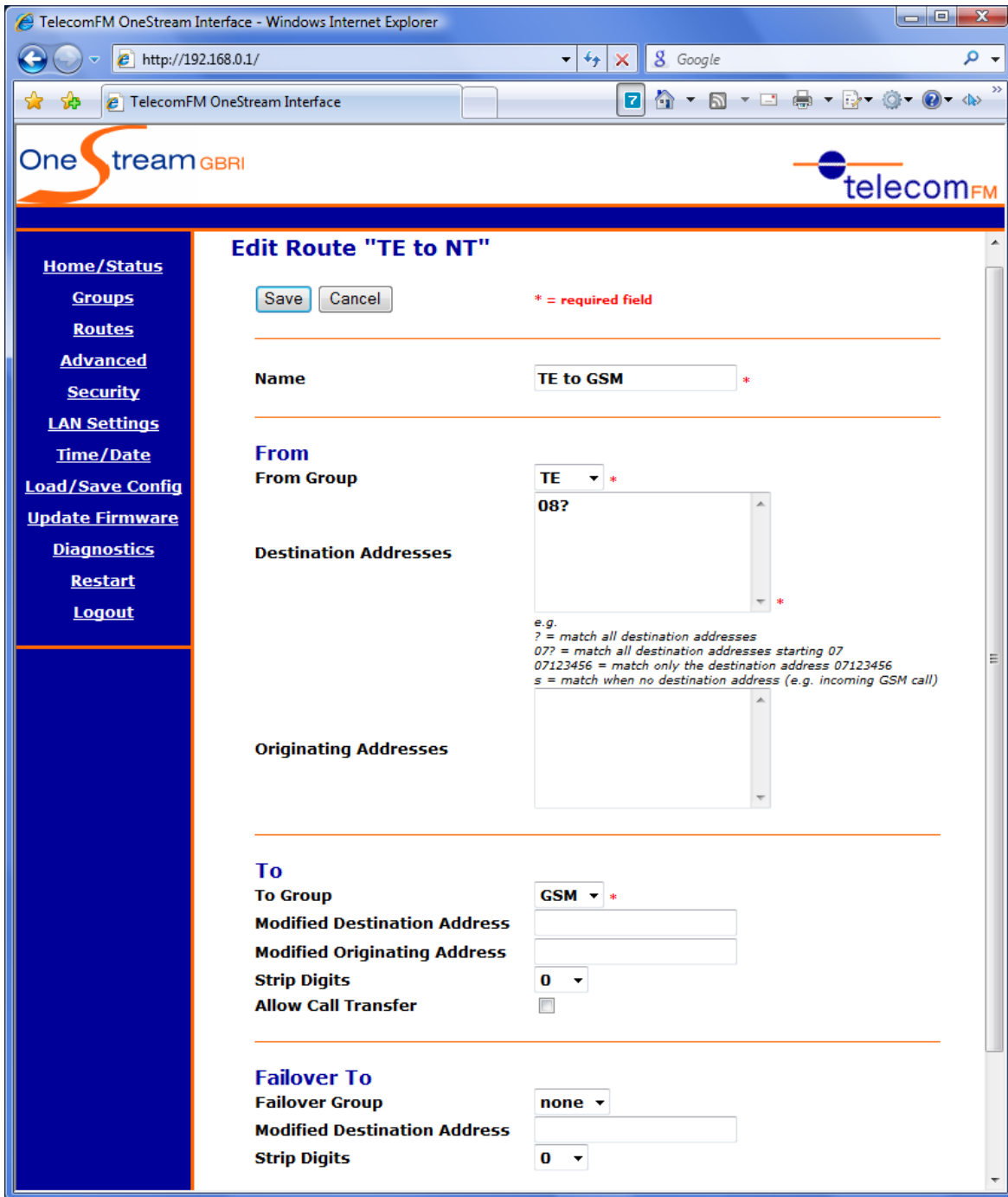


5. Enter the Password for the OneStream unit and click the Login button. The default password is **12345678**. If the password entered is correct you will be taken to the Home page.
6. Click on the **Routes** link on the left of the page. The current routing table will then be displayed. This may be correct if pre-configured by the supplier, if not it will have the default setting shown here:



7. To alter the routing to your requirements for Outbound GSM calls from the PBX, click the Edit  icon next to the route named **TE to NT** and set the following options:

- Change the **Name** of the route to **TE to GSM**
- In **Destination Address** change the ? to (for example) **08?** in order to route any number beginning with 08. The ? is a wild card that allows any digit dialled after the 08.
- In **To Group** change the NT to **GSM**




The screenshot shows the 'Edit Route "TE to NT"' configuration page in a web browser. The page has a blue sidebar with navigation links: Home/Status, Groups, Routes, Advanced, Security, LAN Settings, Time/Date, Load/Save Config, Update Firmware, Diagnostics, Restart, and Logout. The main content area is titled 'Edit Route "TE to NT"' and contains the following fields:

- Name:** A text input field containing 'TE to GSM' with an asterisk indicating it is a required field.
- From:** A section containing:
 - From Group:** A dropdown menu set to 'TE' with an asterisk.
 - Destination Addresses:** A text area containing '08?' with an asterisk. Below it is a legend:
 - e.g. ? = match all destination addresses
 - 07? = match all destination addresses starting 07
 - 07123456 = match only the destination address 07123456
 - s = match when no destination address (e.g. incoming GSM call)
 - Originating Addresses:** An empty text area.
- To:** A section containing:
 - To Group:** A dropdown menu set to 'GSM' with an asterisk.
 - Modified Destination Address:** An empty text input field.
 - Modified Originating Address:** An empty text input field.
 - Strip Digits:** A dropdown menu set to '0'.
 - Allow Call Transfer:** An unchecked checkbox.
- Failover To:** A section containing:
 - Failover Group:** A dropdown menu set to 'none'.
 - Modified Destination Address:** An empty text input field.
 - Strip Digits:** A dropdown menu set to '0'.

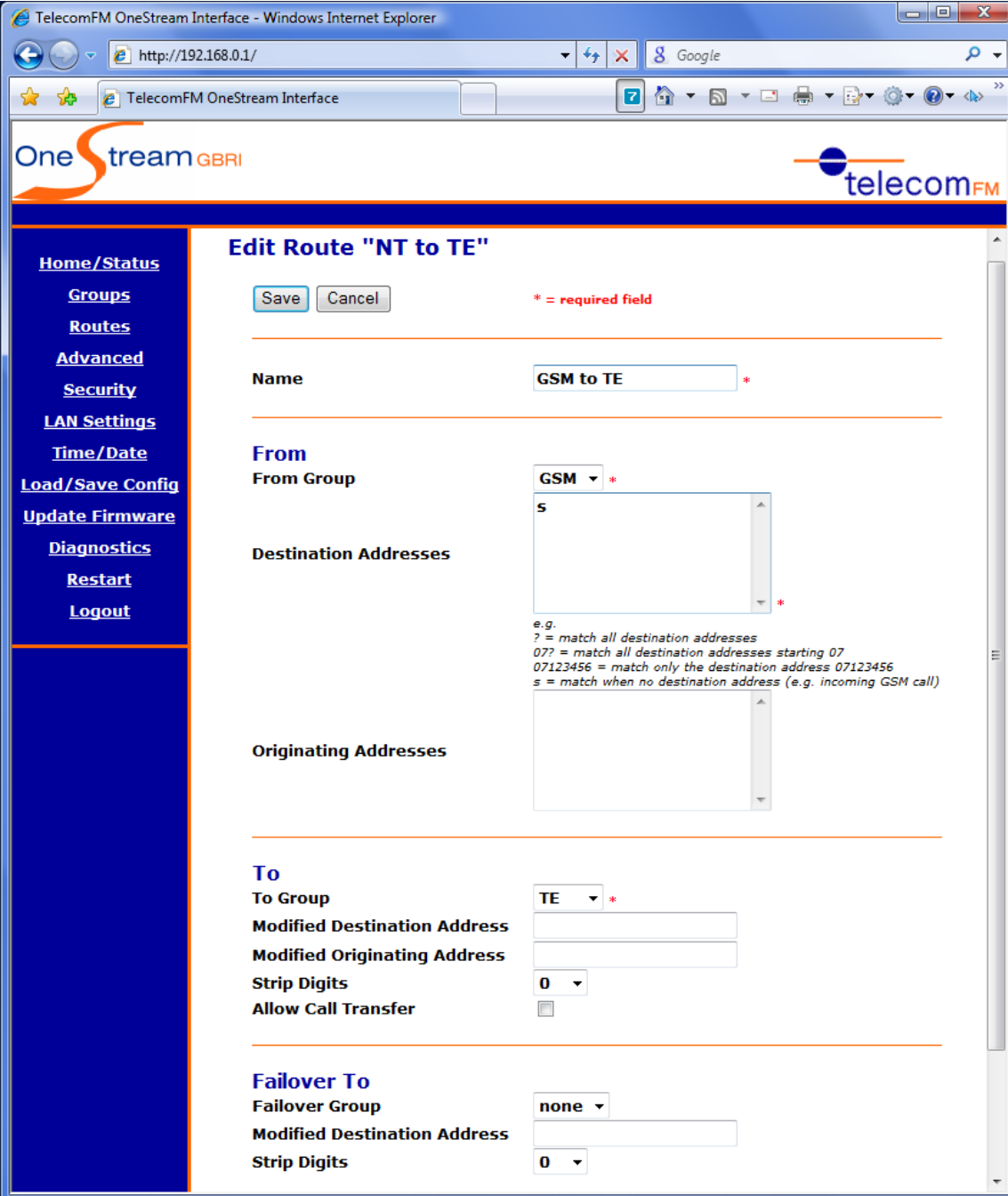
At the top of the form, there are 'Save' and 'Cancel' buttons, and a legend indicating that an asterisk (*) denotes a required field.

Click the **Save** button to save your changes and return to the routing table

OneStream GBRI Quick Start Guide

8. To alter the routing to your requirements for Inbound GSM calls to the PBX, click the Edit  icon next to the route named **NT to TE** and set the following options:

- Change the **Name** of the route to **GSM to TE**
- In **From Group** change the NT to **GSM**
- In **Destination Address** change the ? to **s** as this is required for an incoming call when no destination address is set.



The screenshot shows the 'TelecomFM OneStream Interface' in a Windows Internet Explorer browser window. The page title is 'Edit Route "NT to TE"'. The interface includes a navigation menu on the left with options like Home/Status, Groups, Routes, Advanced, Security, LAN Settings, Time/Date, Load/Save Config, Update Firmware, Diagnostics, Restart, and Logout. The main content area contains the following fields:

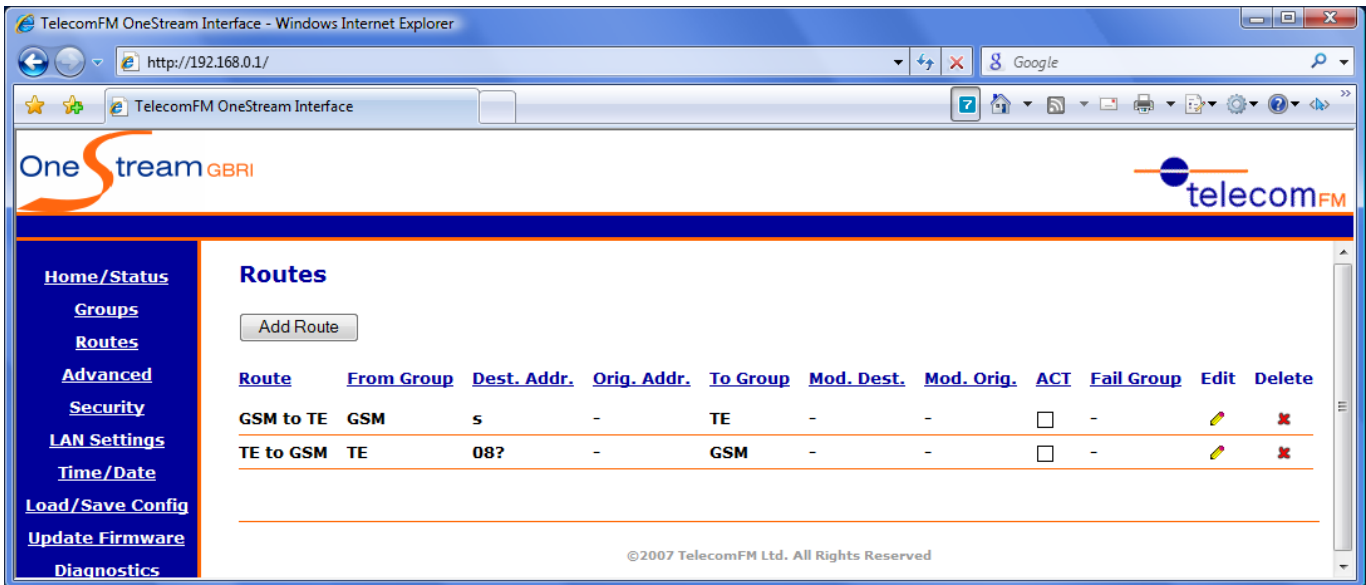
- Name:** GSM to TE *
- From Group:** GSM *
- Destination Addresses:** s *
- Originating Addresses:** (empty field)
- To Group:** TE *
- Modified Destination Address:** (empty field)
- Modified Originating Address:** (empty field)
- Strip Digits:** 0
- Allow Call Transfer:**
- Failover To:** none
- Failover Group:** none
- Modified Destination Address:** (empty field)
- Strip Digits:** 0

Below the Destination Addresses field, there is a legend:

e.g.
 ? = match all destination addresses
 0?? = match all destination addresses starting 07
 07123456 = match only the destination address 07123456
 s = match when no destination address (e.g. incoming GSM call)

Click the **Save** button to save your changes and return to the routing table

The Routing table should now look like this:



The OneStream is now ready for use.