

OneStream GFX Quick Start Guide

Version 2 – for firmware 1.2.1430.io

This guide gives a basic overview of installing and programming the OneStream GFX to route calls between PBX Trunk ports and GSM. For more information please refer to the **OneStream Hardware Installation Guide** and **OneStream Programming Guide** which are both included with the unit.

1 Hardware Installation

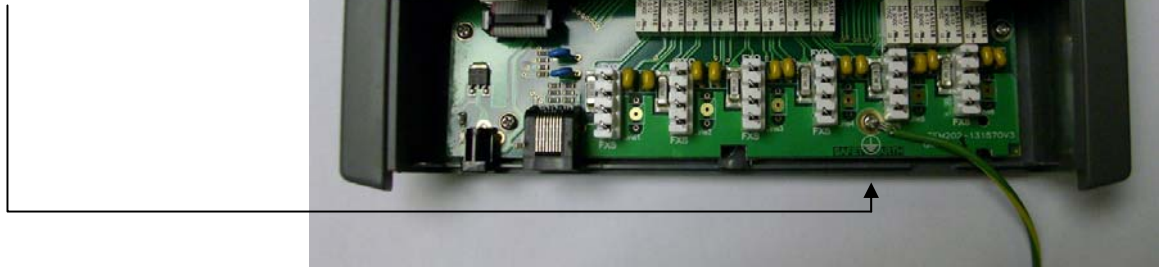
1. Insert SIM Cards and attach Antennae:



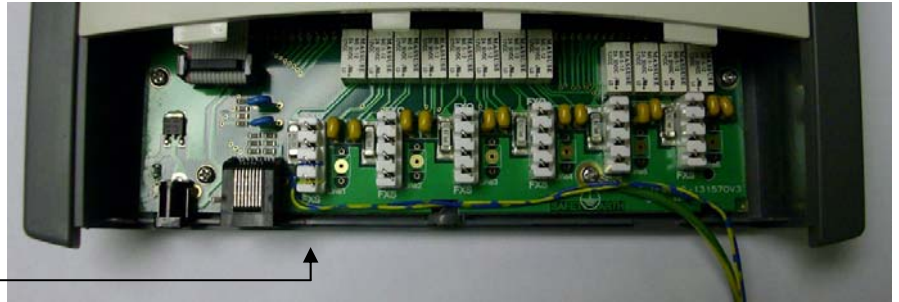
2. Take the bottom cover off by removing the small screw at the bottom of the unit and sliding the cover downwards



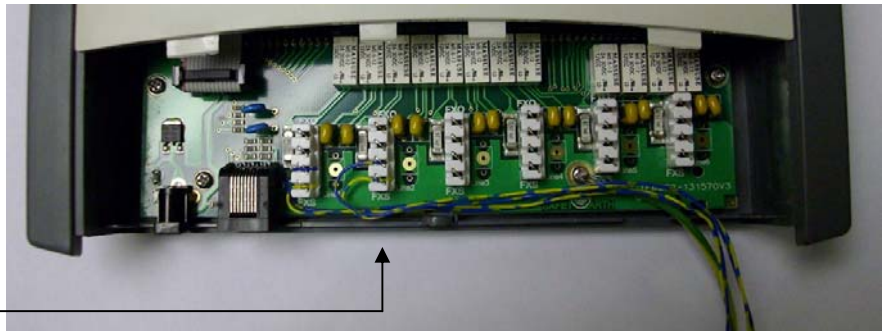
3. Connect the Safety Earth Ground



4. Connect the first FXS port on the OneStream to an available Trunk Port on the PBX.



5. Connect the second FXS port on the OneStream to an available Trunk Port on the PBX.



6. Replace the bottom cover by sliding it back upwards and replacing the screw.



7. Connect the power to the unit and wait for the Red LED to go out.



OneStream GFX Quick Start Guide

2 Programming

By default:

The Default routing plan will route all calls from the PBX to GSM and will route all incoming calls from GSM to the PBX.

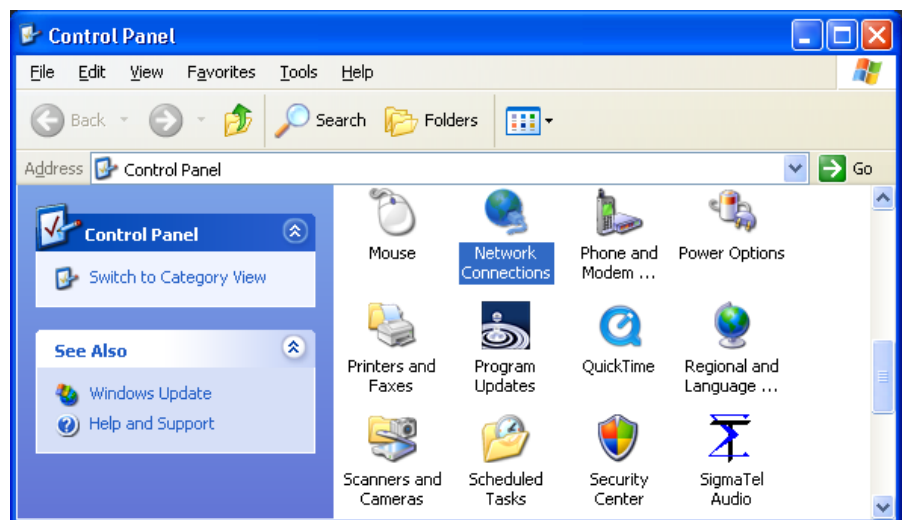
If you wish to change the routing plan (e.g. to only allow calls starting 08 to go to GSM) then use the following procedure:

When OneStream starts up, it will try to find a DHCP Server to obtain an IP Address automatically. If it does not find a DHCP server, it will use its default IP Address of **192.168.0.1**.

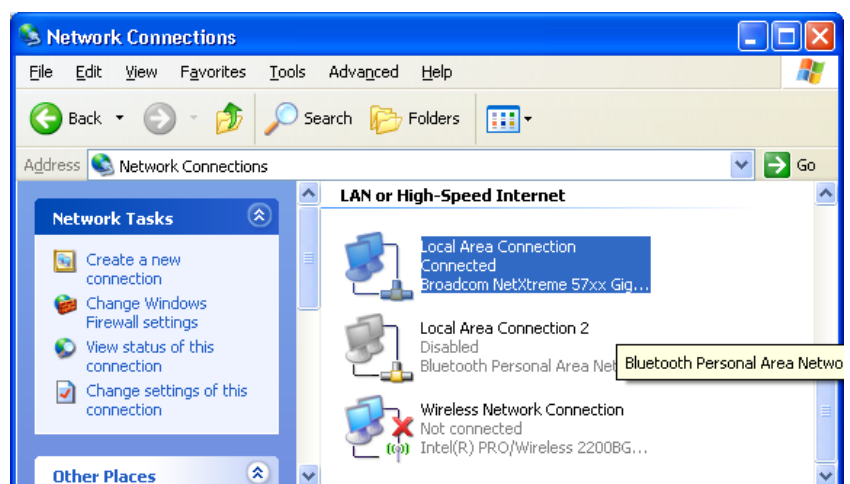
2.1 Setting up your PC

In order to access the OneStream Web Interface and program the unit your PC must be set to a compatible IP Address e.g. 192.168.0.2. To change the IP Address of your PC:

1. Click on the **Start** menu, **Control Panel** (if you do not see the display like this then click on "Switch to Classic View"):

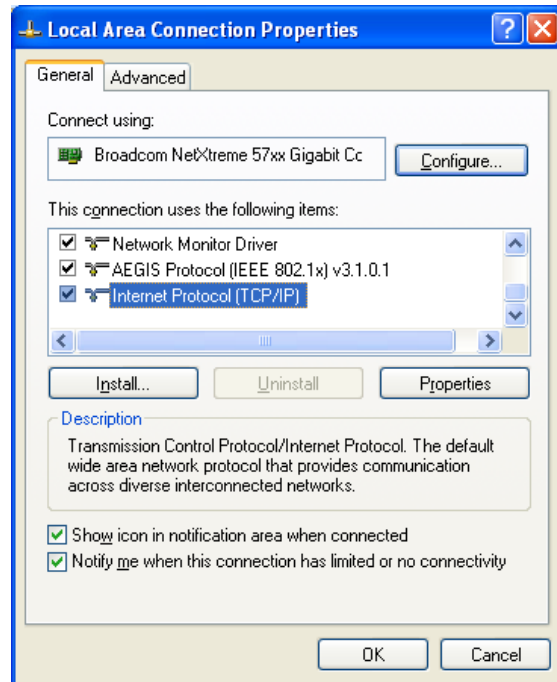


2. Double-click on **Network Connections**:



OneStream GFX Quick Start Guide

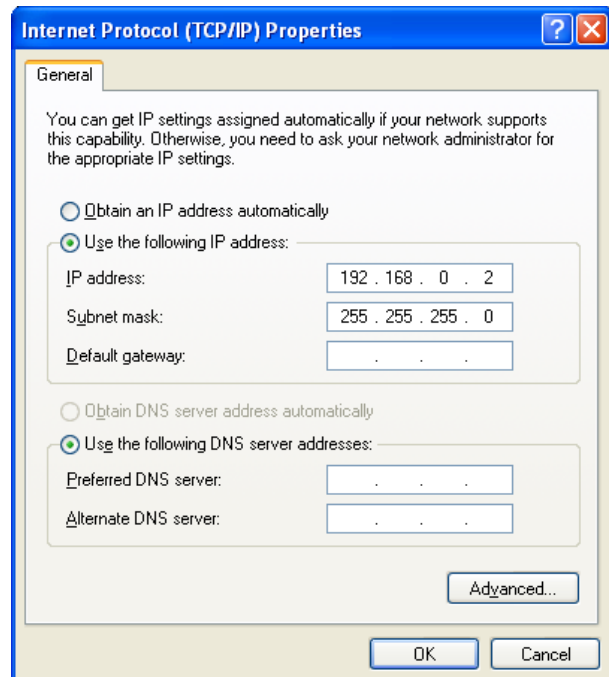
3. Right-click the **Local Area Connection** icon and click **Properties**:



4. Click on the **Internet Protocol (TCP/IP)** entry and click the **Properties** button.

Click the **Use the following IP address** option and fill in the details as shown here:

IP Address: **192.168.0.2**
Subnet Mask: **255.255.255.0**



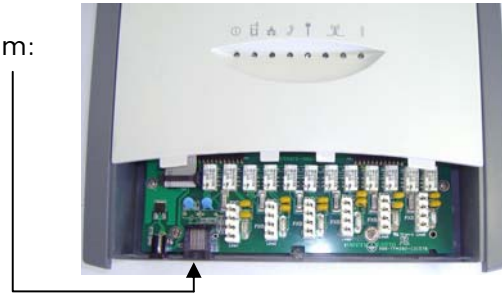
Click the **OK** button to exit the Internet Protocol Properties window

Click the **Close** button to exit the Local Area Connection Properties window

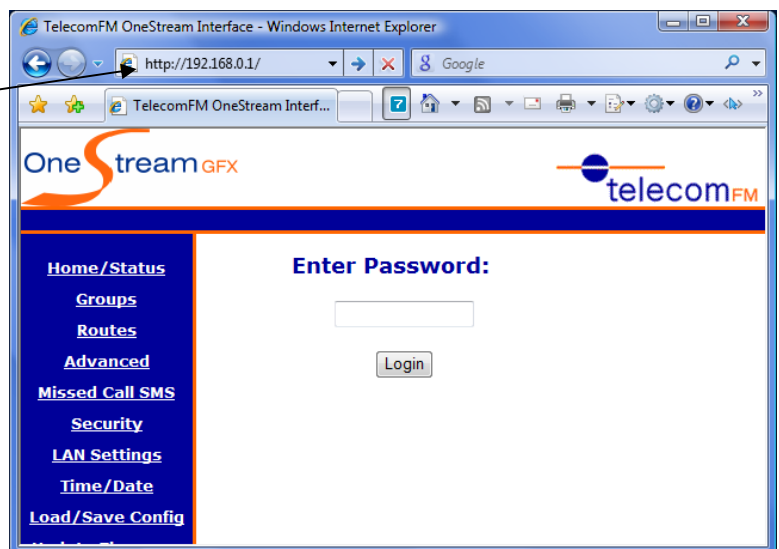
OneStream GFX Quick Start Guide

2.2 Editing the OneStream Programming

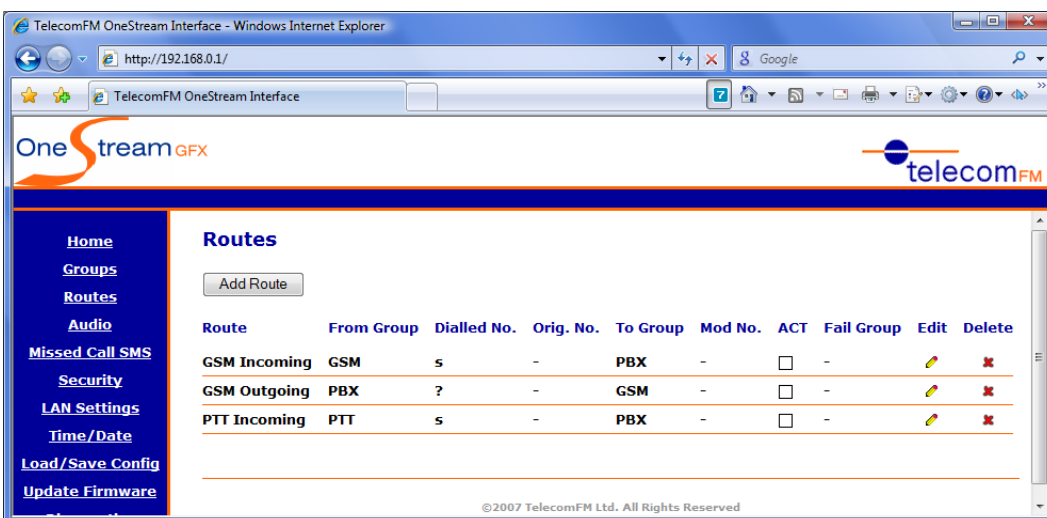
1. Connect one end of a **Crossover (X-Over) Ethernet Cable** to the LAN port of the OneStream:




2. Connect the other end of the Crossover Ethernet cable to the LAN port of your computer.
3. Open Internet Explorer web browser on your PC.
4. In the Address Bar of the Internet Explorer window type the IP Address of the OneStream unit **192.168.0.1** and press the Enter key. You will see the Login screen for the OneStream unit:



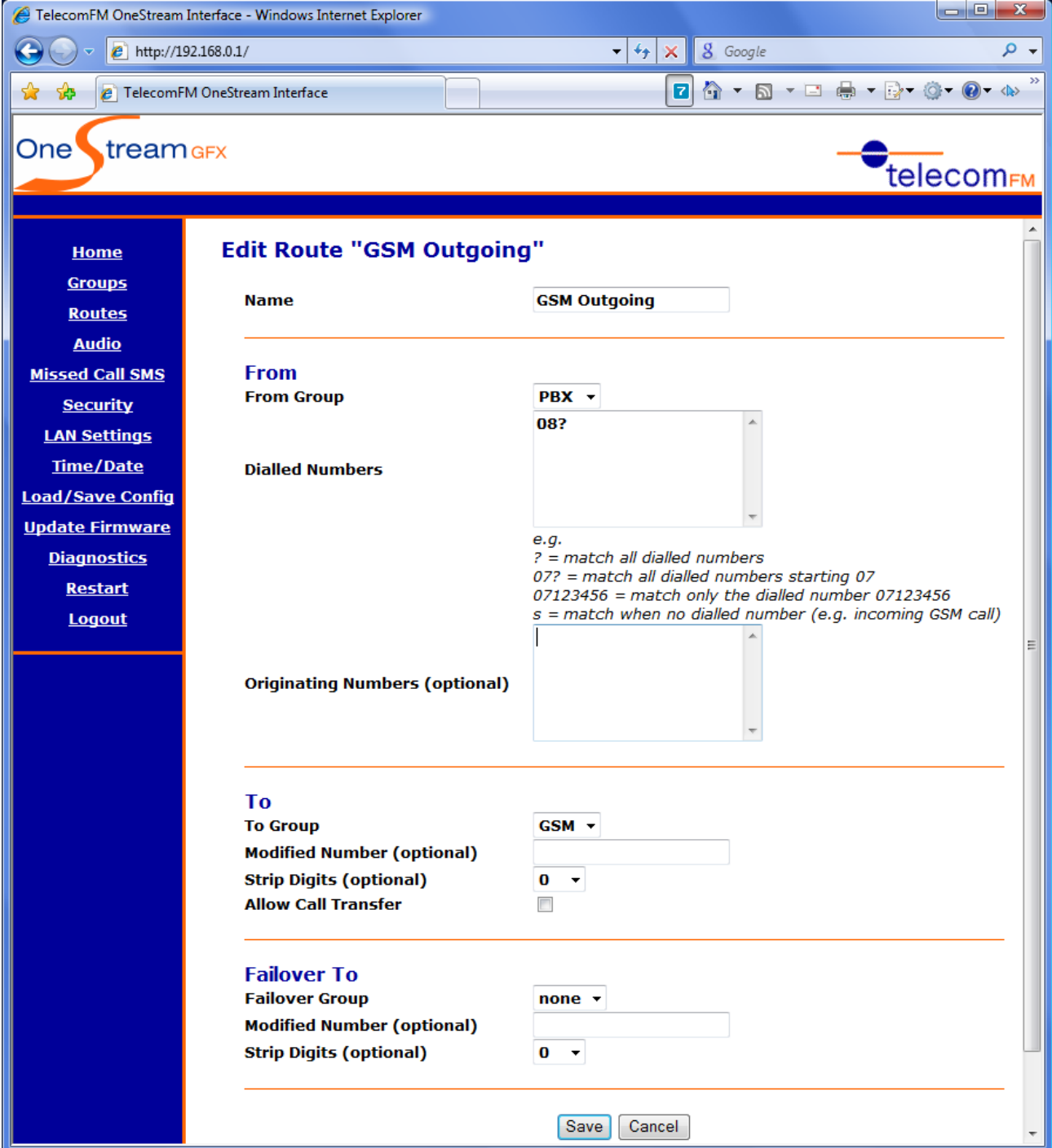
5. Enter the Password for the OneStream unit and click the Login button. The default password is **12345678**. If the password entered is correct you will be taken to the Home page.
6. Click on the **Routes** link on the left of the page. The current routing table will then be displayed. This may be correct if pre-configured by the supplier, if not it will have the default setting shown here:



OneStream GFX Quick Start Guide

7. To alter the routing to your requirements for Outbound GSM calls from the PBX, click the Edit  icon next to the route named **GSM Outgoing** and set the following options:

- In **Dialled Numbers** change the ? to (for example) **08?** in order to route any number beginning with 08. The ? is a wild card that allows any digit dialled after the 08.



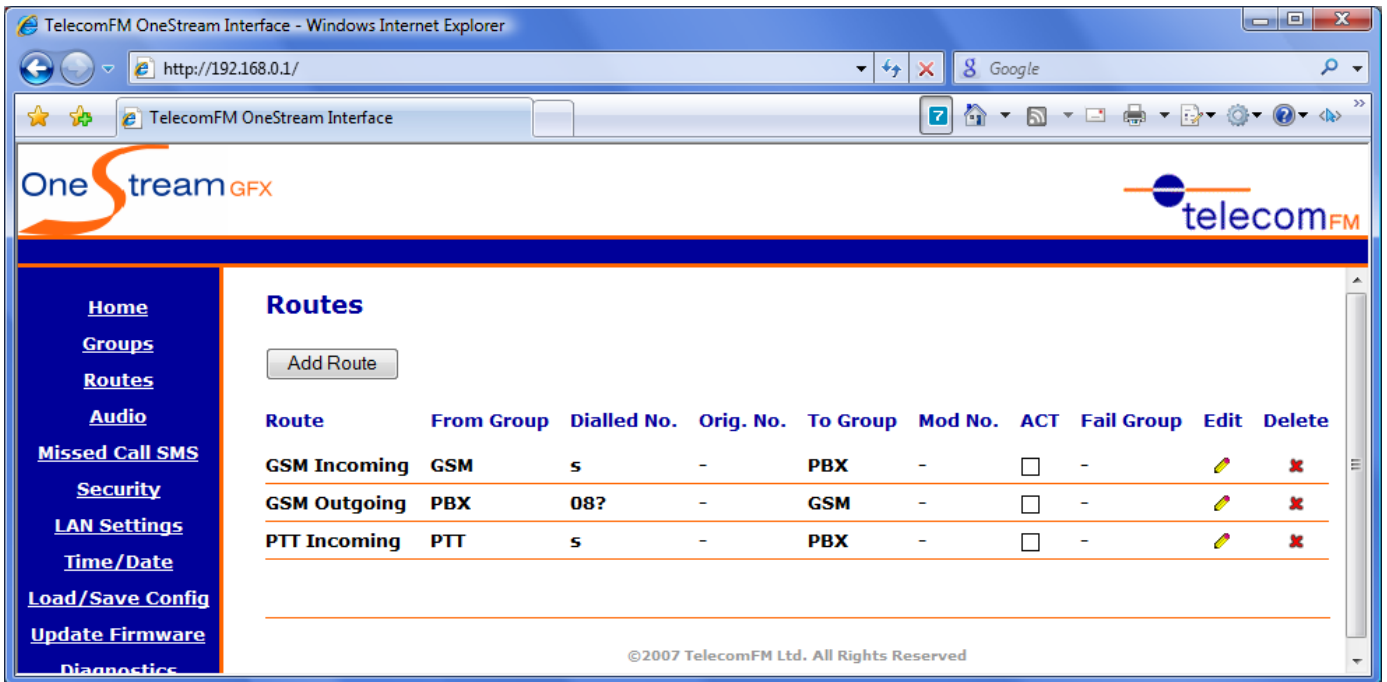
The screenshot shows the 'Edit Route "GSM Outgoing"' configuration page in the TelecomFM OneStream Interface. The page is displayed in a Windows Internet Explorer browser window. The interface includes a navigation menu on the left with options like Home, Groups, Routes, Audio, Missed Call SMS, Security, LAN Settings, Time/Date, Load/Save Config, Update Firmware, Diagnostics, Restart, and Logout. The main content area is titled 'Edit Route "GSM Outgoing"' and contains the following fields:

- Name:** GSM Outgoing
- From:**
 - From Group:** PBX
 - Dialled Numbers:** 08?
- Originating Numbers (optional):** (Empty text box)
- To:**
 - To Group:** GSM
 - Modified Number (optional):** (Empty text box)
 - Strip Digits (optional):** 0
 - Allow Call Transfer:**
- Failover To:**
 - Failover Group:** none
 - Modified Number (optional):** (Empty text box)
 - Strip Digits (optional):** 0







At the bottom of the form, there are 'Save' and 'Cancel' buttons. A help text block explains the dialled numbers format: 'e.g. ? = match all dialled numbers, 07? = match all dialled numbers starting 07, 07123456 = match only the dialled number 07123456, s = match when no dialled number (e.g. incoming GSM call)'.

Click the **Save** button to save your changes and return to the routing table

The Routing table should now look like this:



The screenshot shows a web browser window titled "TelecomFM OneStream Interface - Windows Internet Explorer" with the address bar showing "http://192.168.0.1/". The page features the "OneStreamGFX" logo on the left and the "telecomFM" logo on the right. A navigation menu on the left includes links for Home, Groups, Routes, Audio, Missed Call SMS, Security, LAN Settings, Time/Date, Load/Save Config, Update Firmware, and Diagnostics. The main content area is titled "Routes" and contains an "Add Route" button and a table with the following data:

Route	From Group	Dialled No.	Orig. No.	To Group	Mod No.	ACT	Fail Group	Edit	Delete
GSM Incoming	GSM	s	-	PBX	-	<input type="checkbox"/>	-		
GSM Outgoing	PBX	08?	-	GSM	-	<input type="checkbox"/>	-		
PTT Incoming	PTT	s	-	PBX	-	<input type="checkbox"/>	-		

At the bottom of the page, the copyright notice reads: ©2007 TelecomFM Ltd. All Rights Reserved.

The OneStream is now ready for use.